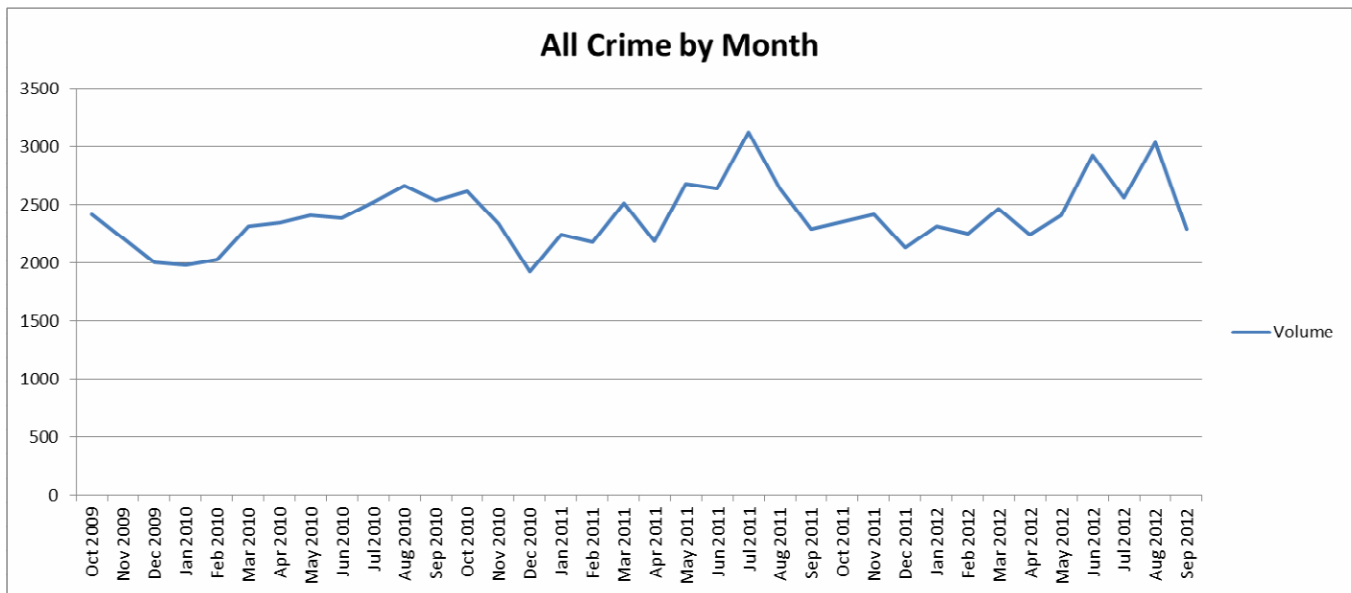


APPENDIX 1

Tower Hamlets
Community Safety Partnership Plan
2013 – 2016

DRAFT

Key Facts about Crime and Disorder in Tower Hamlets



Between 1st October, 2011 and 30th September 2012, the Community Safety Partnership has achieved the following:

- Reduced the number of Most Serious Violence offences (Grievous Bodily Harm and Murder) per 1000 of the population by 22% (102 less offences than the same period the year before)
- Reduced the number of Gun Crime Offences by 5% (3 less offences than the same period the year before)
- Reduced the number of Residential Burglaries by 6% (84 less offences than the same period the year before)
- Reduced the number of Thefts From Motor Vehicles by 28% (668 less offences than the same period the year before)
- Reduced the number of Serious Youth Violence victims by 27% (80 less victims than the same period the year before)
- Reduced the number of young people entering the criminal justice system by 27% (64 less young people)
- Reduced the number of Anti-Social Behaviour reports to the Police by 11.9% (3130 less reports)
- Reduced the number of arson incidents by 21% (156 less incidents)
- Increased the number of drug users in treatment, so that the borough now has the highest number in treatment compared to all other London Boroughs

Foreword by Mayor of Tower Hamlets and Co-Chairs of CSP

Welcome to Tower Hamlet's Community Safety Plan covering the three years 2013/14 to 2015/16.

The Community Safety Plan sets out how the Police, Council, Probation, Health, Fire Service, voluntary and community sectors and individuals can all contribute to reducing crime, disorder, anti-social behaviour, substance misuse and re-offending to keep Tower Hamlets a safe place.

This Plan aims to reduce the number of crimes and anti-social behaviour in the borough, but in some categories, it aims to increase the number of reports, due to under reporting where historically victims don't feel confident enough to report it to us. By increasing reporting and therefore recording, we will then be able to offer support to those victims and take appropriate action against the perpetrators.

The people in our communities are not just numbers or statistics, crime and disorder impacts on not only the victim's but also the wider community's quality of life, so we understand how important it is for you that we tackle it in a timely, efficient and effective way.

We are confident that this plan not only captures and addresses the priorities that have been identified through our analysis of evidential information and performance in the borough, but also the concerns of the people of Tower Hamlets.

We recognise that not only do we have a duty to continue to tackle crime and disorder but we all (both organisations and members of the public), have a duty to prevent it from happening in the first place.

As a partnership we are responsible for community safety and community cohesion. We will work with our local communities to ensure we protect the vulnerable, support our communities to develop and make Tower Hamlets a safer place for everyone.

Contents

| | |
|--|----|
| Introduction | 5 |
| About the Partnership | 6 |
| Governance | 7 |
| Governance Structure | 10 |
| CSP and Sub-groups | 11 |
| Highlights from 2012/13 | 15 |
| Strategic Assessment 2012 | 19 |
| Performance | 20 |
| Public Consultation | 29 |
| Decision on Priorities | 30 |
| Priorities for 2013 – 16 | 31 |
| Priority A – Gangs and Serious Youth Violence | 32 |
| Priority B – Anti-Social Behaviour | 36 |
| Priority C – Drugs and Alcohol | 39 |
| Priority D – Violence | 42 |
| Priority E – Hate Crime and Cohesion | 46 |
| Cross-Cutting Priorities | 50 |
| Cross-cutting Priority 1 – Public Confidence | 51 |
| Cross-cutting Priority 2 – Reducing Re-offending | 53 |

Introduction

The Tower Hamlets Community Safety Partnership (CSP) is required by law to conduct an annual assessment of crime, disorder, anti-social behaviour, substance misuse and re-offending within the borough, this is known as the Strategic Assessment. It is also required to consult members of the public and the wider partnership on the levels of the above. The Strategic Assessment and the findings of the public consultation are then used to produce the partnership's Community Safety Plan.

Since 2011, the CSP has had the power to decide the term of its Community Safety Plan. In 2012, the CSP chose to have a one year plan, this decision was based on the unique budgetary pressures on partner agencies and the anticipated demand on service from London hosting the 2012 Olympic and Paralympic games.

This Community Safety Plan will run for a period of 3 years from 1st April 2013 to 31st March 2016, with performance against the priorities within it reviewed on an annual basis in the form of the annual Strategic Assessment. The Community Safety Partnership Subgroups each produce an Action/Delivery Plan to reflect both the Priorities of the Community Safety Partnership and their own subgroup priorities. If due to external pressures or levels of performance against the priorities, the Community Safety Plan can be amended on an annual basis within its three year term.

Reducing crime and anti-social behaviour requires a careful balance between reducing recorded incidents, encouraging reporting and addressing negative perceptions of those who believe its levels are worse than they are in reality.

This plan will ensure that the issues that are most important to the people of Tower Hamlets will be addressed in the most appropriate and cost effective way. The partnership are committed to ensuring the low levels of particular crimes and issues are maintained but have also identified through local evidence and perception, a number of priorities that require particular partnership focus in the coming three years.

This Plan sets out the main objectives of the CSP and how it plans to achieve those objectives.

About The Partnership

The Tower Hamlets Community Safety Partnership (CSP) is a multi-agency strategic group set up following the Crime and Disorder Act 1998. The partnership approach is built on the premise that no single agency can deal with, or be responsible for dealing with, complex community safety issues and that these issues can be addressed more effectively and efficiently through working in partnership. It does this by overseeing the following:

- Service Outcomes
- Leadership and Partnership Working
- Service Planning & Performance Management
- Resource Management & Value for Money
- Service Use and Community Engagement
- Equality & Diversity

The CSP is made up of both Statutory Agencies and Co-operating Bodies within the Borough. The Statutory Agencies are:

- Tower Hamlets Police
- London Borough of Tower Hamlets
- London Probation Trust
- London Fire Brigade
- Tower Hamlets Public Health / NHS

The Mayor's Office for Policing and Crime (MOPAC), replaced the Metropolitan Police Authority in February 2012, is no longer a statutory agency of the CSP, but becomes a co-operating body. Representatives from MOPAC and the Tower Hamlets Police and Community Safety Board are both members of the CSP.

The above are supported by key local agencies from both the Public and Voluntary Sectors. Registered Social Landlords (RSLs) have a key role to play in addressing crime and disorder in their housing estates and these are represented by the Chair of the Tower Hamlets Housing Forum. Victims and witnesses of crime and disorder are represented on the CSP by Victim Support. The extensive network of voluntary organisations within the borough, are represented by Tower Hamlets Council for Voluntary Services' Chief Executive.

Representation on the CSP is through attendance by senior officer / person within that organisation, with the authority to make strategic decisions on behalf of their agency/organisation.

Partners bring different skills and responsibilities to the CSP. Some agencies are responsible for crime prevention while others are responsible for intervention or enforcement. Some have a responsibility to support the victim and others have a responsibility to deal with the perpetrator. Ultimately the CSP has a duty to make Tower Hamlets a safer place for everyone.

Governance

The Community Safety Partnership is one of 4 Community Plan Delivery Groups which are held responsible by the Partnership Executive for delivering the aims/actions contained within the Community Plan.

Partnership Executive

The Partnership Executive is the borough's Local Strategic Partnership and brings key stakeholders together to create and deliver the borough's Community Plan. Members of the Partnership include the Council, Police, NHS, other statutory service providers, voluntary and community groups, faith communities, businesses and citizens. It acts as the governing body for the Partnership, agreeing priorities and monitoring performance against the Community Plan targets and holding the Partnership to account through active involvement of local residents. The Community Plan is an agreement that articulates the aspirations of local communities and sets out how the Borough will work together to realise these priorities.

Community Plan

The overall vision for the community plan is to improve the lives of all those living and working in the borough. The Community Plan includes 4 main priorities of which 'A Safe and Cohesive Community' and Tower Hamlets will be a safer place where people feel safer, get on better together and difference is not seen as a threat but a core strength of the borough. To make Tower Hamlets a Safe and Cohesive Community the Partnership will focus on achieving the following objectives:

- 1: Focusing on crime and anti-social behaviour
- 2: Reducing re-offending
- 3: Reducing the fear of crime
- 4: Fostering greater community cohesion
- 5: Tackling violent extremism

Mayor's Priorities/Pledge

As part of his election manifesto, the Mayor of Tower Hamlets committed to pledges under 7 key areas, one of these was Community Safety/Cohesion. Under this Pledge, the Mayor and the Community Safety Partnership are committed to:

- Continue no means-tested charges for Telecare Alarms
- Put a more visible uniformed police presence on our streets and estates
- Bring our diverse communities together to build 'One Tower Hamlets'

Mayor's Office for Policing and Crime (MOPAC)

The Mayor of London's Office for Policing and Crime, under the remit of being London's Police and Crime Commissioner has several responsibilities regarding Community Safety Partnerships. They are:

- a duty to consult the communities (including victims) and to publish a Police and Crime Plan
- determining police and crime objectives
- are a co-operating body on Community Safety Partnerships
- have the power to 'call in' poor performing Community Safety Partnerships

As of February 2013, MOPAC are in the process of consulting the public on their draft Police and Crime Plan 2013 – 17. The proposed priorities within that Plan are:

- Strengthen the Metropolitan Police Service and drive a renewed focus on street policing
- Give victims a greater voice
- Create a safer London for women
- Develop smarter solutions to alcohol and drug crime
- Help London's vulnerable young people

In addition to the above, the Mayor of London has placed special emphasis on a number of additional public safety challenges and concerns of Londoners, which include:

- Violence Against Women and Girls
- Serious Youth Violence
- Business Crime

It proposes to set a total 20% reduction target for the following group of 'key crimes' across the whole of London by 2016:

- Reduction in the number of Personal Robberies
- Reduction in the number of Residential Burglaries
- Reduction in the number of Thefts From Motor Vehicles
- Reduction in the number of Thefts of Motor Vehicles
- Reduction in the number of Thefts From a Person
- Reduction in the number of Violence with Injury incidents
- Reduction in the number of acts of Vandalism

In addition to the above, it also proposes the following individual targets to achieve by 2016:

- 20% Increase in Public Confidence in the Police
- 20% Reduction in Re-offending by Young People Leaving Custody
- 20% Reduction in Court Delays
- 20% Increase in Compliance with Community Sentences

MOPAC is also responsible for the management and allocation of the Community Safety Fund monies from Central Government. Allocations for funding will be made on a 'Challenge Fund' approach, which will determine the nature and scale of funding to individual boroughs based on their proposal's alignment with the Police and Crime Plan Priorities.

Community Safety Partnership Sub-Groups

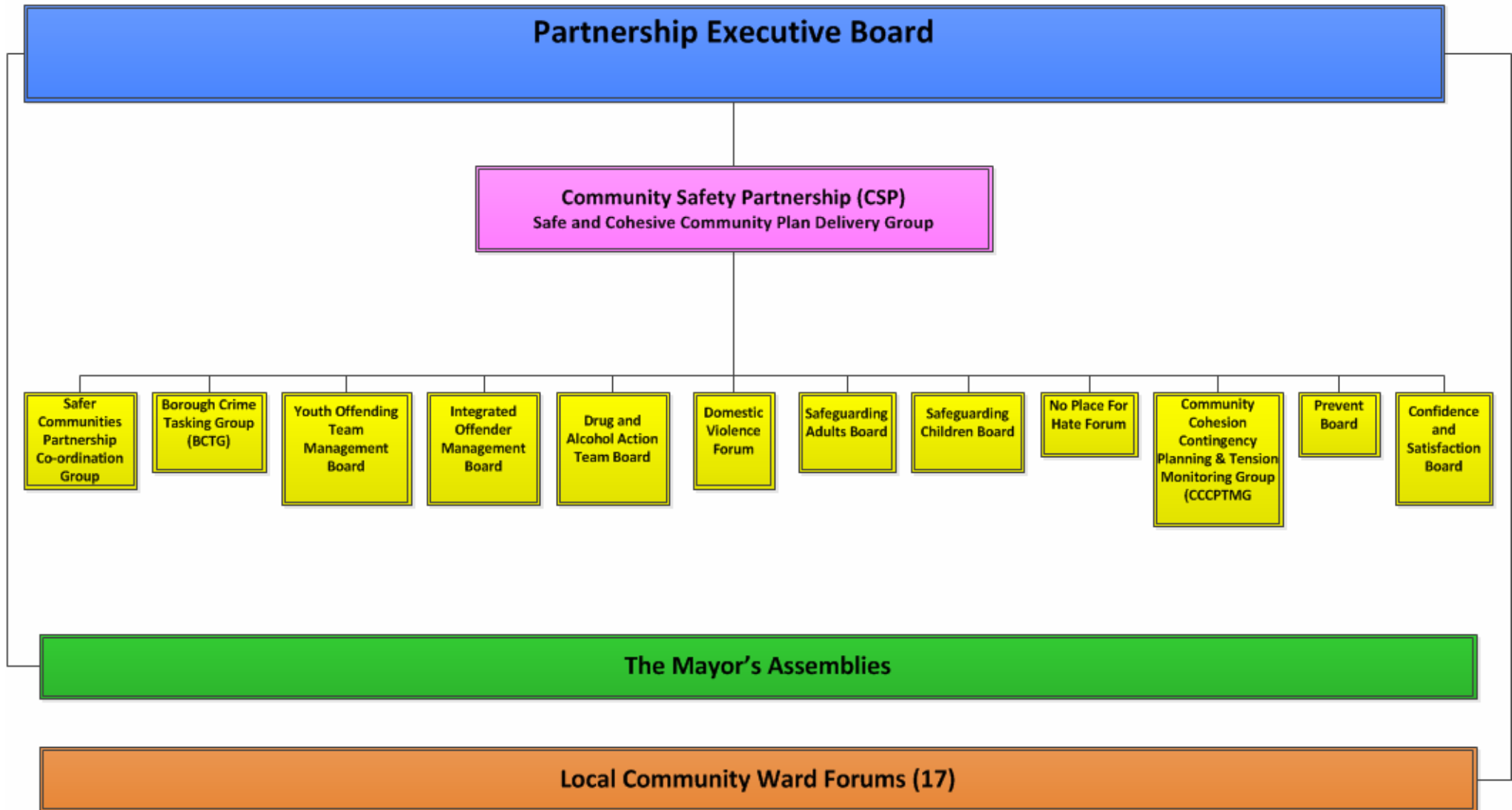
In order to co-ordinate and deliver activity in the various areas of crime, disorder, anti-social behaviour, substance misuse and reducing re-offending, the CSP has a sub-structure of groups and boards. Each sub-group/board is responsible for producing a delivery plan which aims to address the overarching partnership priorities and fulfil any additional priorities they see fit as a sub-group/board. They are responsible for ensuring there are resources available to deliver their actions and if needed, produce and submit detailed funding applications to enable this.

Subgroups are represented through their Chairperson on the Community Safety Partnership, who is required to provide a bi-monthly update on performance against their delivery plan.

Subgroups are made up of senior officers within key agencies who have a direct responsibility for service delivery in these specific areas of work.

The diagram on the next page illustrates the current Community Safety Partnership governance structure.

Community Safety Partnership Governance



DRAFT

Community Safety Partnership and Subgroups

Community Safety Partnership

The CSP as it is known amongst the partners is accountable for the reduction of crime, disorder, anti-social behaviour, substance misuse and reoffending as well as increasing community cohesion under the Community Plan Partnership Structure. It will determine priorities and oversee the statutory and non-statutory boards responsible to deliver against these priorities. The CSP meets on a bi-monthly basis and is co-chaired by the Tower Hamlets Police Borough Commander and the Tower Hamlets Deputy Mayor with responsibility for Community Safety. Membership of the CSP is at organisational Chief Executive/Officer level.

Youth Offending Team Management Board

The YOT Management Board oversees the youth offending multi-agency team which comprises of staff from: the Council (Education Social Care and Wellbeing, and the Youth Service), Police, Probation and Health. The team works with young people from arrest through to sentencing. Staff provide services including bail and remand management and Pre-Sentence reports to the Youth, Magistrates and Crown Courts and work with young people subject to reprimands and final warnings from police, and those charged, convicted and given community and custodial sentences. The team also works with young people and the wider community to prevent young people entering the criminal justice system.

Safeguarding Children Board

This multi-agency board comprises of lead officers from; Health; Police; Housing; Education Social Care and Wellbeing; Commissioning Bodies; Voluntary Sector; Probation; Legal Services; Department for Work and Pensions and Social Services who are the lead agency. The board co-ordinates activity aimed at ensuring that vulnerable children are protected through the application of LBTH's Child Protection Policy. In addition to reporting to the CSP, the Board reports to the Health and Wellbeing Board on an annual basis.

Safeguarding Adults Board

This multi-agency board comprises of lead officers from; Health; Police; Housing; Education; Commissioning Bodies; Voluntary Sector; Probation; Legal Services; Department for Work and Pensions, London Fire Brigade and Social Services who are the lead agency. The board co-ordinates activity aimed at ensuring that vulnerable adults are protected through the application of LBTH's Adult Protection Policy. In addition to reporting to the CSP, the Board reports to the Health and Wellbeing Board on an annual basis.

Drug and Alcohol Action Team Board

This board is chaired by the Corporate Director of Communities, Localities and Culture, with membership representing the CLC DAAT team, health services, the Metropolitan Police Service, London Probation Service, Public Health and Education, Social Care and Wellbeing. It is a statutory board with responsibilities for co-ordinating and commissioning services relating to drug / alcohol issues in the borough including; drug / alcohol treatment for adults and young people, prevention and behaviour change, licensing and regulation / enforcement.

Domestic Violence Forum

The Domestic Violence Forum is chaired by the Head of Community Safety and oversees the borough's multi-agency approach to addressing domestic violence against men, women and young people. This includes sexual violence, trafficking, prostitution, sexual exploitation, dowry abuse, female genital mutilation, forced marriage, so called 'honour' based violence, stalking and harassment which are the Borough's strands within its Violence Against Women and Girls Plan.

Membership comprises of approx. 80 organisations representing both statutory and voluntary services providers in the borough. The forum takes place quarterly and has oversight of the Multi-Agency Risk Assessment Conference (The MARAC), the Specialist Domestic Violence Court, The DV One Stop Shop, The Housing & Health DV drop-in services, The LBTH Domestic Violence duty line, training and all safeguarding matters related to domestic abuse. The Forum is ultimately responsible for ensuring that appropriate services are provided within the borough for both domestic violence victims and those perpetrating violence against them.

Borough Crime Tasking Group

The board was established as part of the programme to join together partnership service delivery in the localities. It meets on a fortnightly basis and uses an analytical product/profile on current/emerging crime and anti-social behaviour issues to task police resources to respond. The group is chaired by the Police Borough Commander and the membership includes various ranking police officers. The London Fire Brigade and Tower Hamlets Homes are represented on group in addition to the following officers from the council; Head of Community Safety, Head of Enforcement & Markets, ASB Analyst and Surveillance & Intelligence Officer.

Safer Communities Partnership Co-ordination Group

This group is made up of operational managers from Safer Communities Service within the Council and is responsible for the tasking of council resources to respond to emerging local issues and concerns based on an analytical product/profile of emerging/current community safety issues. The group is chaired by the Head of Safer Communities and is also attended by other operational managers from across the partnership.

Integrated Offender Management Board

This group is responsible for the management of offenders in the community. The board is chaired by a Police Superintendent and brings together a range of activity including the Priority and Prolific Offender Scheme, the Youth Offending Team, Probation and the Drugs Intervention Programme. The objective of this board is to increase community safety, community confidence and reduce the level of re-offending of identified individuals.

Community Cohesion Contingency Planning and Tension Monitoring Group (CCCPTMG)

This group is chaired by the Service Head of Corporate Strategy and Equalities and acts as an operational tension monitoring group. The group is made up of representatives from the Interfaith Forum, the London Muslim Centre, the Council of Mosques, Rainbow Hamlets, Tower Hamlets Housing Forum, Youth Services, Tower Hamlets Police, London Fire Brigade, the Council's Safer Communities Service, Corporate Safety and Civil Protection, Communications and One Tower Hamlets

Preventing Violent Extremism Programme Board

This board is chaired by the Council Service Head for Corporate Strategy and Equality; it operates as a distinct board with responsibility for delivering the local Prevent programme. The board is made up of officers from One Tower Hamlets, Youth Services, Tower Hamlets Police, NHS Tower Hamlets, Safer Communities, Communications, London Fire Brigade and the Council's Education, Social Care and Wellbeing Directorate.

No Place For Hate Forum

The forum brings key agencies together to work in partnership to make Tower Hamlets a better place to live, work and visit by developing and promoting a co-ordinated response to race and hate crimes. It aims to protect and support victims, deter perpetrators, challenge prejudice and hate, which ultimately contributes to creating a safer, more cohesive community. The Forum meets on a quarterly basis, is chaired by the Chair of the borough's Interfaith

Forum, with members from both statutory and voluntary organisations, all of whom represent specific areas or communities concerning hate crime.

Confidence and Satisfaction Board

The confidence and satisfaction of the community in our shared approach to crime and cohesion are key success measures. The group is chaired by the Police Borough Commander, with representatives from the Council and the Police & Community Safety Board. It has an overview of activity to ensure that community views and concerns are understood and addressed both efficiently and effectively. It also ensures that residents have access to relevant information, including feedback on action taken.

DRAFT

Highlights from 2012/13

The Community Safety Partnership faced a challenging year in 2012/13, with cuts to resources (both financial and human), organisational restructures and the added pressure on service delivery from the Olympic and Paralympic Games in the summer months. However, partners still managed to reduce crime and disorder in the borough.

During the summer the borough saw an increase in visitors to the borough from all over the world, coped with a severely restricted transport infrastructure (main arterial roads in/out of the borough designated part of Olympic Route and Alternative Route Networks) and hosting the Victoria Park Live Site.

Domestic Violence:

The last 12 months has seen extensive developments in the services provided by the LBTH Domestic Violence Team. We opened up the boroughs first DV One Stop Shop in partnership with the Police Community Safety Unit and have implemented a further 2 weekly drop-in services in partnership with Housing & Health. This has not only increased the reporting of domestic violence substantially, but raised awareness of our services which has led to a 400% increase in DV1 referrals to the team.

We have provided extensive training to both the statutory & voluntary sector organisations and are currently supporting agencies to develop their own DV policies & procedures.

Drugs and Alcohol:

The DAAT Board Launched our Substance Misuse Strategy 2012-15 in 2012. It increased the number of drug and alcohol users accessing treatment so that the borough now has the highest number of drug users in treatment in the whole of London. It increased the number of Drug Intervention Programme referrals into treatment so this too is the highest in the whole of London. The DAAT Implemented Alcohol Treatment Satellites in GP surgeries and the Royal London Hospital, which improves accessibility for those who need it most. Through the Somali Engagement Action Plan, it commissioned a Somali Link Worker service to improve access to services for the borough's Somali community. We were also recognised for our 'Hidden Harm' work by being named 'runner-up' in the London Safeguarding Awards.

Anti-Social Behaviour:

The use of an anti-social behaviour order or ASBO, are seen as an important tool used by the police and partners as a non-judicial order to prevent offending and improve the behaviour within Tower Hamlets. There are currently 62 ASBO's, of those 16 have been obtained in the past year, 4 relate directly to Anti-Social Behaviour and 5 have been obtained for alcohol related ASB. There are currently 6 gang related orders, which is an area that the police intend to concentrate on, to address the gang and serious youth violence issues. Local partners also utilise Anti-Social Behaviour Injunctions (ASBI's) and Acceptable Behaviour Contracts (ABC's).

Arson across the borough has fallen by 37% over the last 12 months, this has been achieved through Fire Brigade crews working alongside partners in the Council to identify rubbish "hotspots" and ensure the sites are cleared before arson is committed. The firework period, which after many years of high numbers of arson incidents, saw incidents fall dramatically this November following partnership working between LFB, Police Safer Neighbourhood Teams and Trading Standards/Licensing to limit the sale of fireworks.

Reduction of first time entrants in Criminal Justice System:

We have continued to reduce and prevent the number of young people entering the criminal justice system for the first time through our partnership working between Police and YOTs Pre-court/Triage Team.

The latest Ministry of Justice figure published in Feb 2013, reported that over the 12 month period ending in September 2012, we have seen the lowest number of young people entering the criminal justice system for the first time. The report confirmed that during this period 167 young people entered the criminal justice system compared to 231 in the previous 12 month. The YOT Pre-court/triage team dealt with 213 young people during this reporting period.

Furthermore, the first time entrants rate per 100,000 - 10-17 year old receiving their first reprimand, warning or conviction for the same periods has also seen an improvement from 1,288 down to 799.

Integrated Offender Management:

During 2012/13 the IOM Board and Team have successfully supported and provided 8 individuals with treatment and provision of on-going support, so that none of them are currently committing offences. This has resulted in these individuals no longer committing burglaries and other related criminal offences and providing for a safer community.

Confidence and Satisfaction:

Tower Hamlets Police have worked to engender improved professionalism amongst its staff so that a quality service is provided to all victims of crime and Anti-Social Behaviour, as well as responding more effectively to calls for Police assistance. This has resulted in an improvement in Customer Confidence in 2012/13 to date (Feb 2013), which we will further build on in the coming 3 years.

Hate Crime and Cohesion:

12 Hate Crime Third Party Reporting Centres have been maintained, which have received 80 reports since the 2008 re-launch. Victim Support have trained 6 Specialist Hate Crime Volunteers to support victims and are offering support to both victims and witnesses of hate crime through the court process. All victims of hate crime have, where possible been visited in person by the Police Community Safety Unit, who also now have a 24 hour specialist advice line for partnership officers. The Hate Incident Panel has reviewed 73 cases from April – September 2012, which resulted in further action taken in 14 of these.

Community Cohesion Contingency Planning and Tension Monitoring Group (CCCPTMG):

The CCCPTMG has undertaken a partnership approach to both tackling and reducing tensions in a number of areas. The group were actively involved with the planning of protocols to tackle any cohesion related issues that may arise from the Olympics, in particular around Team USA being based at Mile End Park. In addition to this, work has been undertaken throughout the year to tackle the threat posed by the English Defence League. This included a dedicated seminar to look at our response to the English Defence League and also supporting Waltham Forest in their successful application banning the EDL from marching in their borough.

We have also been at the forefront of reducing local tensions as a result of the recent 'Muslim patrol' videos that had appeared online. This has led to the arrest of 5 individuals, none of whom reside in Tower Hamlets.

The Group has been involved in reducing tensions that have come about from international issues but have had an impact locally. In particular the Hanbury Street Mural, tensions in the Middle East and more recently the political issues in Bangladesh.

Our success is evidenced through the boroughs annual residents' survey where the majority of residents (78%) feel that the local area is a place where people from different backgrounds get on well together. This is a growing trend and the highest in the past 5 years.

Preventing Violent Extremism Programme Board:

We secured funding from the Home Office for five projects working with a wide range of local partners, including schools, tenants and residents associations and parents groups.

We developed and rolled out the 'Building Community Resilience' project, working with London Tigers and colleagues in Redbridge and Barking and Dagenham to engage and support young people to become resilient to extremism. The success of this project has been recognised by the Home Office and we have secured funding to extend the project into 2013/14.

We have seen a reduction of on-street recruitment by extremist organisations during the course of the year and an increase in community venues signing up to the No Place for Hate pledge and preventing such groups hiring venues in the borough. We have also delivered Prevent training to more than 60 staff this year and expecting to continue to deliver further training throughout 2013.

DRAFT

Strategic Assessment 2012

The Strategic Assessment aims to fulfil the Partnership's statutory responsibility and identify key strategic priorities for the Partnership, which will then inform the Community Safety Plan.

The Strategic Assessment provides data driven evaluation of the current community safety issues in the Borough, possible developments over the next 3 years and recommendations for further action to address issues.

The partnership examined the context of current themes within community safety and took into account key national, regional and local priorities. In addition to these, it also included priorities for partner agencies over the coming years

The Strategic Assessment was developed based on close analysis of data against the CSP's 64 performance indicators (CSP Performance Dashboard), which are monitored at the CSP meetings under the nine existing headings below that reflect the CSP Sub-groups. The Partnership believed that these headings are the most efficient way to monitor data, and take into account the national, regional and local priorities. The nine headings are:

- Violent Crime (11 indicators)
- Property Crime (9 indicators)
- Youth Crime (6 indicators)
- Violence Against Women and Girls (10 indicators)
- Drugs and Alcohol (10 indicators)
- Integrated Offender Management (3 indicators)
- Anti-social Behaviour (ASB) (5 indicators)
- Cohesion and Hate Crime (6 indicators)
- Public Confidence (4 indicators)

The statutory partners provided information on the above indicators and they have been reviewed in the Strategic Assessment in terms of the following factors:

- Data and Analysis: 1st October 2011 – 30th September 2012
- Trends over the last 3 years (October 2009 – September 2012)
- Foreseeable developments in the next 3 years
- Recommendations

In addition to the information supplied by the statutory partners, additional information was provided by Victim Support and Tower Hamlets Council for Voluntary Services (on behalf of victims, witnesses and organisations working in the voluntary and community sector) and Registered Social Landlords.

Please note: Due to the time scales and production schedule for the Community Safety Plan, we are unable to use full financial year figures to base the plan on. For an up to date position on the CSP's performance see Performance 2012/13 column overleaf

Performance from Strategic Assessment 2012

1st October 2011 – 30th September 2012

Please note: There are no Sanction Detection (SD) Rates available from 3 previous years, which prevents comparison with current rates.

***Sanction Detections** can be defined as those where an offender has been charged, cautioned, reported for summons, reprimanded, the offence has been taken into consideration or where a fixed penalty notice has been issued in relation to a Notifiable Offence.

| Violent Crime | | | | | | | |
|---|---------------------------------------|----------------------------------|----------------------------------|----------------------------------|---------------------------------|-------------------------------------|--|
| Performance Indicator | Lead Agency for Performance Indicator | Performance 2009/10 (Oct – Sept) | Performance 2010/11 (Oct – Sept) | Performance 2011/12 (Oct – Sept) | Performance 2012/13 (Apr – Mar) | Difference (+/-%) 2011/12 - 2010/11 | Direction of Travel (Oct 2009 – Sept 2012) |
| Number of 'Most Serious Violence' offences | Police | 401 | 456 | 354 | 345 | -22% | 11% Decrease |
| Most Serious Violence Sanction Detection (SD) Rate* | Police | - | - | 142 (40%) | 145 (42%) | - | - |
| Number of Gun Crimes | Police | 74 | 60 | 57 | 48 | -5% | 23% Decrease |
| Gun Crime SD Rate* | Police | - | - | 15 (26%) | 20 (41%) | - | - |
| Number of Knife Crimes | Police | 406 | 599 | 606 | 573 | +1% | 49% Increase |
| Knife Crime SD Rate* | Police | - | - | 145 (24%) | 134 (23%) | - | - |
| Assault with Injury | Police | 1963 | 1732 | 1716 | 1860 | -1% | 13% Decrease |
| Number of DV Murders | Police | 3 | 2 | 2 | 1 | - | 33% Decrease |

Property Crime

| Performance Indicator | Lead Agency for performance indicator | Performance 2009/10 (Oct – Sept) | Performance 2010/11 (Oct – Sept) | Performance 2011/12 (Oct – Sept) | Performance 2012/13 (Apr – Mar) | Difference (+/-%) 2011/12 - 2010/11 | Direction of Travel (Oct 2009 – Sept 2012) |
|-------------------------------------|--|---|---|---|--|--|---|
| Number of Personal Robberies | Police | 887 | 1307 | 1317 | 1357 | +1% | 48% Increase |
| Number of Commercial Robberies | Police | 41 | 87 | 72 | 79 | -19% | 76% Increase |
| Total Robbery Numbers | Police | 928 | 1396 | 1389 | 1436 | -0.5% | 50% Increase |
| Robbery SD Rate* | Police | - | - | 180 (13%) | 197 (14%) | - | - |
| Number of Residential Burglaries | Police | 1014 | 1472 | 1388 | 1409 | -6% | 37% Increase |
| Residential Burglary SD Rate* | Police | - | - | 132 (9.5%) | 118 (8%) | - | - |
| Number of Thefts of Motor Vehicle | Police | 854 | 858 | 845 | 846 | -1.5% | 1.1% Decrease |
| Number of Thefts From Motor Vehicle | Police | 1730 | 2404 | 1716 | 1821 | -28% | 1% Decrease |
| Number of Theft of Pedal Cycle | Police | 1448 | 1192 | 1517 | 1467 | +27% | 5% Increase |

DRAFT

| Youth Crime | | | | | | | |
|---|---------------------------------------|----------------------------------|----------------------------------|----------------------------------|---------------------------------|-------------------------------------|--|
| Performance Indicator | Lead Agency for performance indicator | Performance 2009/10 (Oct – Sept) | Performance 2010/11 (Oct – Sept) | Performance 2011/12 (Oct – Sept) | Performance 2012/13 (Apr – Mar) | Difference (+/-%) 2011/12 - 2010/11 | Direction of Travel (Oct 2009 – Sept 2012) |
| Number of Serious Youth Violence offences | Police | 234 | 297 | 217 | 212 | -27% | 7% Decrease |
| Number of young people entering the Youth Justice System for the first time | LBTH - YOT | 241 | 229 | - | 169 | - | 2010/11 vs 2009/10 5% Decrease |
| Triage Restorative Intervention diverting 1 st time offenders from Youth Justice System: | LBTH - YOT | 157 | 154 | 180 | 178 | +17% | 15% Increase |
| a) Referrals to pre-court intervention (Triage, Reprimand & Final Warning) | | 234 | 255 | 246 | 214 | -3.5% | 5% Increase |
| b) Satisfactory completion of intervention | | 96 | 118 (76.6%) | 103 (57.2%) | Available Aug 2013 | -13% | 7% Increase |
| c) Satisfactory completion who go on to re-offend | | 14 | 19 (16.1%) | 13 (12.6%) | Available Aug 2013 | -31% | 7% Decrease |
| d) Failed to complete intervention who go on to re-offend | | 20 | 4 (11.1%) | 7 (24.1%) | Available Aug 2013 | +75% | 65% Decrease |
| % of custodial remands compared to 'all' remand decisions | LBTH - YOT | 13.22% | 21.56% | 18.66% | 15.5% | -3% | 5% Increase |
| % of custodial sentences compared to all court disposals | LBTH - YOT | 22 (4.35%) | 40 (7.81%) | 23 (5.57%) | 7.1% | -2% | 1% Increase |
| Proven re-offending by young offenders | LBTH - YOT | 35.9% | 35.8% | 37.4% (9 months data) | 40% | +2% | 2% Increase |

Violence Against Women and Girls

Please note: Due to historic under reporting of violence against women and girls, significant work is being undertaken to increase both confidence in reporting and early reporting of these offences/crimes, to ensure that the actual levels of are established and more importantly, so that the victim/survivors receive partnership support at the earliest possible opportunity (see Priority D Violence (with a focus on Domestic Violence, page 44 for what action the partnership takes to address VAWG). Due to this work, we hope that this will have an impact (increase) on the number of reports of violence against women and girls, as seen below.

| Performance Indicator | Lead Agency for performance indicator | Performance 2009/10 (Oct – Sept) | Performance 2010/11 (Oct – Sept) | Performance 2011/12 (Oct – Sept) | Performance 2012/13 (Apr – Mar) | Difference (+/-%) 2011/12 - 2010/11 | Direction of Travel (Oct 2009 – Sept 2012) |
|---|---------------------------------------|----------------------------------|----------------------------------|----------------------------------|---------------------------------|-------------------------------------|--|
| Number of Domestic Violence offences | Police | 1719 | 1682 | 1789 | 1993 | +6% | 4% Increase |
| Domestic Violence SD Rate* | Police | - | - | 774 (43%) | 953 (48%) | - | - |
| Domestic Offence Arrest Rate | Police | - | - | 1483 (83%) | 1664 | - | - |
| Number of Rapes | Police | 122 | 138 | 136 | 119 | -1% | 11% Increase |
| Rape SD Rate* | Police | - | - | 28 (21%) | 35 (22%) | - | - |
| Number of Other Serious Sexual offences | Police | 289 | 271 | 269 | 257 | -1% | 7% Decrease |
| Other Serious Sexual Offences SD Rate* | Police | - | - | 56 (21%) | 56 (17%) | - | - |
| Reduce the length of time DV is experiences before it is reported to a specialist agency | LBTH | No Data | No data | 3.63 years | 3.63 years | - | - |
| Number of individuals referred to MARAC again within 12 months of original referral | LBTH | No Data | No data | 59 | 52 | - | - |
| % victim satisfaction rate of victims cases coming through the Specialist Domestic Violence Court | LBTH | No Data | No data | 80% - 100% | 90% - 100% | - | - |

Drugs and Alcohol

| Performance Indicator | Lead Agency for performance indicator | Performance 2009/10 (Oct – Sept) | Performance 2010/11 (Oct – Sept) | Performance 2011/12 (Oct – Sept) | Performance 2012/13 (Apr – Mar) | Difference (+/-%) 2011/12 - 2010/11 | Direction of Travel (Oct 2009 – Sept 2012) |
|---|--|--|---|---|--|--|---|
| Number of drug intervention programme referrals that re-offend | LBTH - DAAT | 257 | 242 | No data | No data | - | 2010/11 vs 2009/10 6% Decrease |
| Number of drug users recorded as being in effective treatment | LBTH - DAAT | 1616 <small>(Nov 2009- Oct. 2010)</small> | 1636 <small>(Nov 2010- Oct. 2011)</small> | 1573 <small>(June 2011-May 2012)</small> | 1483 <small>(Jan – Dec 2012)</small> | - | 3% Decrease |
| Number of drug users successfully completing treatment | LBTH - DAAT | Not measured by NDTS | 137 <small>(April 2011 – March 2012)</small> | 147 <small>(April – Sept. 2012)</small> | 240 | +7% | |
| Number of arrests made under 'Dealer a Day' | Police | 420 | 382 | 415 | 397 | +9% | 1% Decrease |
| Number of prison release clients referred and commenced treatment | LBTH - DAAT | 32% | 42% | 75% | 129 / 174 74% <small>(June 2012 – March 2013)</small> | +33% | 43% Increase |
| Number of DIP CJS clients completing treatment | LBTH - DAAT | No Data | No data | 45 <small>(April –Aug 2012)</small> | 403 <small>(May 2012 – March 2013)</small> | - | - |
| Number of DIP clients re-offending after completing treatment | LBTH - DAAT | No Data | No data | 7 <small>(April – Aug 2012)</small> | 88/269 <small>(June 2012 – March 2013)</small> | - | - |
| Number of clients engaging with DIP, captured and referred via targeted testing | LBTH - DAAT | No Data | No data | No data | 1080 Tests 461 Positive <small>(Aug 2012 – Mar 2013)</small> | - | - |

Integrated Offender Management

| Performance Indicator | Lead Agency for performance indicator | Performance 2009/10 (Oct – Sept) | Performance 2010/11 (Oct – Sept) | Performance 2011/12 (Oct – Sept) | Performance 2012/13 (Apr – Mar) | Difference (+/-%) 2011/12 - 2010/11 | Direction of Travel (Oct 2009 – Sept 2012) |
|---|--|---|---|---|--|--|---|
| Percentage of offenders under Probation supervision living in settled and suitable accommodation at the end of their order or license | Probation | No data | 87.6% (Apr. 2011 – Mar. 2012) | 86.7% (Apr. – Sept. 2012) | 87.2% | -1% | - |
| Percentage of offenders under Probation supervision in employment at the end of their order or license | Probation | No data | 55.7% (Apr. 2011 – Mar. 2012) | 57% (Apr. – Mar. 2012) | 52.6% | +1% | - |
| Adult re-offending rates for those under Probation supervision | Probation | 9.76% (Mar. 2010) | 8.96% (Mar. 2011) | 9.1% (Sept. 2012) | -9.85 (July 2011 – June 2012) | +0.1% | 0.6% Decrease |

DRAFT

Anti-Social Behaviour

| Performance Indicator | Lead Agency for performance indicator | Performance 2009/10 (Oct – Sept) | Performance 2010/11 (Oct – Sept) | Performance 2011/12 (Oct – Sept) | Performance 2012/13 (Apr – Mar) | Difference (+/-%) 2011/12 - 2010/11 | Direction of Travel (Oct 2009 – Sept 2012) |
|---|--|---|---|---|--|--|---|
| Number of Police CAD calls for ASB | Police | No data | 26,378 | 23,248 | 19,203 | -11.9% | - |
| LBTH ASB Data | LBTH | 3,619 | 3,260 | 3,128 | 2,803 | -4% | 13% Decrease |
| Number of Arson incidents (all deliberate fires) | London Fire Brigade | 878 | 759 | 603 | 353 | -21% | 31% Decrease |
| Number of Primary fires in domestic buildings | London Fire Brigade | 249 | 233 | 229 | 236 | -2% | 8% Decrease |
| Number of Primary fires in non-domestic buildings | London Fire Brigade | 88 | 87 | 83 | 99 | -5% | 6% Decrease |

Cohesion and Hate Crime

Please note: Due to historic under reporting of hate crime, significant work is being undertaken to increase both confidence in reporting and early reporting of these offences/crimes, to ensure that the actual levels are established and more importantly, so that the victims receive partnership support at the earliest possible opportunity. The performance data below is in the format/categories provided by the police, unfortunately this does not disaggregate it into the 7 strands of hate crime (Disability; Race or Ethnic Identity; Religion/Belief; Gender or Gender Identity; Sexual Orientation; Age and Immigration Status or Nationality), which has historically only been recorded by the police as Race and Religious or Homophobic incidents/crimes (see Priority E Hate Crime and Cohesion, page 48 for what action the partnership takes to address Hate Crime and Cohesion). Due to this work, we hope that this will have an impact (increase) on the number of reports of all types of hate incidents/crimes, as seen below.

| Performance Indicator | Lead Agency for performance indicator | Performance 2009/10 (Oct – Sept) | Performance 2010/11 (Oct – Sept) | Performance 2011/12 (Oct – Sept) | Performance 2012/13 (Apr – Mar) | Difference (+/-%) 2011/12 - 2010/11 | Direction of Travel (Oct 2009 – Sept 2012) |
|--|---------------------------------------|--|---------------------------------------|------------------------------------|---|-------------------------------------|--|
| Number of Racist and Religious offences | Police | 350 | 378 | 345 | 364 | -9% | 1% Decrease |
| Racist and Religious SD Rate* | Police | - | - | 146 (42%) | 140 (42%) | - | - |
| Number of Homophobic offences | Police | 66 | 82 | 71 | 53 | -13% | 8% Increase |
| Homophobic SD Rate* | Police | - | - | 34 (48%) | 29 (56%) | - | - |
| % of hate crime cases coming before the Hate Incidents Panel where formal action is taken | LBTH | 100% 243 (Apr. 2009 – Mar. 2010) | 100% 128 (Apr.2010 – Mar. 2011) | 100% 143 (Apr.2011 – Mar. 2012) | 100% 125 (Apr.2012 – Mar. 2013) | - | - |
| % of people who believe people from different backgrounds get on well together in their local area | LBTH | 75% (Apr. 2009 – Mar. 2010) | 76% (Apr. 2010 – Mar. 2011) | 78% (Apr. 2011- Mar.12) | Awaiting Publishing of Annual Resident Survey | +2% | 3% Increase |

| Public Confidence | | | | | | | |
|--|---------------------------------------|----------------------------------|----------------------------------|----------------------------------|---|-------------------------------------|--|
| Performance Indicator | Lead Agency for performance indicator | Performance 2009/10 (Oct – Sept) | Performance 2010/11 (Oct – Sept) | Performance 2011/12 (Oct – Sept) | Performance 2012/13 (Apr – Mar) | Difference (+/-%) 2011/12 - 2010/11 | Direction of Travel (Oct 2009 – Sept 2012) |
| % of people who feel that 'people being drunk or rowdy in public places' is a fairly/very big problem in their local area | LBTH | 40% (Apr. 2009 – Mar. 2010) | 40% (Apr. 2010 – Mar. 2011) | 43% (Apr. 2011- Mar.12) | Awaiting Publishing of Annual Resident Survey | +3% | 3% Increase |
| % of people who feel that 'vandalism, graffiti and criminal damage' is a fairly/very big problem in their local area | LBTH | 42% (Apr. 2009 – Mar. 2010) | 37% (Apr. 2010 – Mar. 2011) | 41% (Apr. 2011- Mar.12) | Awaiting Publishing of Annual Resident Survey | +4% | 1% Decrease |
| % of people who feel that 'people using or dealing drugs' is a fairly/very big problem in their local area | LBTH | 51% (Apr. 2009 – Mar. 2010) | 52% (Apr. 2010 – Mar. 2011) | 53% (Apr. 2011- Mar.12) | Awaiting Publishing of Annual Resident Survey | +1% | 2% Increase |
| % of people who feel that the 'Council and Police are dealing effectively with local concerns about anti-social behaviour and crime' | LBTH | 48% (Apr. 2009 – Mar. 2010) | 48% (Apr. 2010 – Mar. 2011) | 50% (Apr. 2011- Mar.12) | Awaiting Publishing of Annual Resident Survey | +2% | 2% Increase |

Public Consultation

As part of the partnership's duties to consult the community and the wider partnership on community safety in the borough, an extensive 5 week public consultation took place during May and June 2012.

The public consultation provided the public with the community safety priorities for 2012/13 and gave them the option to choose their top 3 from the list and or to supplement this with any other they deemed appropriate.

People were made aware of the consultation via press articles, letters and email alerts. They were given the opportunity to attend their local Police Safer Neighbourhood Team's Public Meeting, a Borough Public Meeting or a Members' Consultation Session (for elected members only). In addition they could reply in writing /email or respond via the dedicated webpage. This consultation asked members of the public (residents and business people), partnership and community groups/organisations for their top three community safety priorities.

In total 1,013 responses were received, the majority of which (862) were collected through the dedicated web page (Mytowerhamlets) and survey. This collection method also enabled us to monitor the equalities data of those 862 recipients against the Greater London Assembly's 2011 data, full findings of which are included in Public Consultation Report. In summary 65.71% of recipients identified their ethnicity as White (17 percentage point overrepresentation) and 20.36% as Bangladeshi (14 percentage point underrepresentation). In terms of Gender, 42% of respondents were female and 58% were male, which shows a 6.5 percentage point underrepresentation for female. With regards to age the largest group of respondents were those aged between 25 and 39 years of age, making up 50.2% (3.2% overrepresentation) of respondents and the smallest group being the 0 to 16 age group, making up only 5.1% (14.9% underrepresentation), however we cannot expect infants and minors to respond, so we cannot make meaningful statements about this. Those aged between 17 and 24 years made up 9% of respondents, which is an 11 percentage point underrepresentation.

Results:

Based solely on the number of selections by members of the public in Tower Hamlets across all the different collection methods, the top 3 (4 in reality due to two priorities receiving the same number of responses) community safety priorities for the Community Safety Plan 2013-16 are:

| | |
|--------------------------------------|-----|
| 1) Anti-social Behaviour (ASB) | 298 |
| 2) Serious Acquisitive Crime | 200 |
| 3) Drugs and Alcohol | 196 |
| - Violence | 196 |
| 5) Youth Crime | 175 |
| 6) Integrated Offender Management | 130 |
| 7) Community Cohesion and Hate Crime | 124 |
| 8) Public Confidence | 104 |
| 9) Violence Against Women and Girls | 88 |
| 10) Other | 28 |

Priorities – How the Partnership Decided

In December 2012, the Community Safety Partnership was presented with the Strategic Assessment 2012, an Executive Summary of the Strategic Assessment 2012, the Public Consultation Report and a paper which made recommendations based on their findings.

The recommendations took into account areas where trends were going in the wrong direction, areas which the partner agencies had highlighted as being priorities for all the partnership and existing priorities external to the partnership i.e. Home Office, MOPAC and Community Plan as well as the public's perception/priorities.

There are some areas of work which are priorities for individual and/or several partner agencies which the Community Safety Partnership has also taken into account when agreeing its own priorities for the term of this plan. The priorities that have not been deemed a priority by/for the Partnership will continue to remain priorities for those individual agencies and their performance will continue to be monitored and managed by each respective agency.

Priorities for 2013 -2016

The Partnership recognises that it has a responsibility to address all areas of crime, disorder, anti-social behaviour, substance misuse and re-offending as part of its core business. However, it also recognises that there are a few particular areas, which have a greater impact on the people of Tower Hamlets and their quality of life. For this reason, it has agreed that it will place an added focus on these areas and they will form the priorities for the next 3 years.

- **Gangs and Serious Youth Violence**
- **Anti-Social Behaviour (including Arson)**
- **Drugs and Alcohol**
- **Violence (with focus on Domestic Violence)**
- **Hate Crime and Cohesion**
- **Public Confidence**
- **Reducing Re-offending**

DRAFT

Priority A:

Gangs and Serious Youth Violence

Why is it a priority?

Tower Hamlets has one of the highest proportions of young people as a percentage of its population compared to other boroughs both in London and nationally. Whilst Tower Hamlets does not have a significant gang problem compared to other London Boroughs, there are a small number of geographically based gangs in the borough, who sporadically come into conflict with each other. These gangs are responsible for a significant amount of the borough's youth crime and drug dealing. The effects that gangs and incidents of serious youth violence, although both uncommon, have on members' of the wider communities feeling of safety, especially other young people, makes this a priority for the Community Safety Partnership to address.

The borough saw a 27% reduction in the number of serious youth violence incidents and therefore victims for the period October 2011 – September 2012 when compared to the previous year. However, it is common to see increases and decreases, year on year as they can be skewed by unexpected events.

Young people aged 8 - 17, which form the Youth Offending Service's service users' age cohort, account for 10.4% of the Tower Hamlets population (27,280 residents^[1]). This is above the proportion those aged 0 to 17 for Inner London which stands at 9.8% of the population, but below the figure for Greater London of 11%

This age group is projected to increase in size by 7.8% over the next 5 years^[2] to reach 29,400 8 - 17 year olds by 2017. It is then projected to increase further over the following 5 years to reach 33,426 residents by 2022, which represents a 22.5% increase over the current 2012 number.

Responsible Board/CSP Sub-group:

Youth Offending Team Management Board
Strategic Gangs Strategy Board
Operational Gangs Partnership

What will we aim to achieve this year?

- Reduce the levels of ASB, Drugs, Homicide, Firearms discharges, Knife crime, and Serious Youth Violence
- Reduce First Time Entrants (FTE) to the youth justice system by early intervention
- Reduce the harm caused by street gangs across the borough

^[1] ONS 2011 Census

^[2] GLA SHLAA population projections – 2012 Round

- Reduce re-offending
- Reduce the use of custody, especially remands into custody
- Focus activity towards offenders who present most risk and harm to the community
- Support interventions to prevent young people from becoming involved in gang crime and serious youth violence
- Improve the numbers of young offenders in Education, Training and Employment
- With partners, offer practical assistance to individuals wishing to stop their involvement in gang criminality
- Engage young people on the periphery of gangs in positive activities
- Deliver sturdy enforcement of the law against those who persist with gang criminality, ASB, drugs, knife crime and youth violence
- Make best use of all available Criminal Justice opportunities to prevent and disrupt gang criminality and bring offenders before the courts
- Train magistrates in the work we are doing in respect of gangs
- Ensure there is process for the community to provide information and we can demonstrate it has been acted upon
- Run a violent offender group-work programme via the Youth Offending Service
- Become actively involved in the Safe and Secure Project

How will we measure success?

- Number of Serious Youth Violence incidents
- Number of young people engaged with through the Police Gang Matrix
- Reduction in the number of First Time Entrants into the Criminal Justice System
- Number of young people from Police Gang Matrix:
 - Placed in Education, Training or Employment
 - Placed in suitable housing
- Re-offending Rates
- Performance Framework
- Police Public Attitude Survey
- Social Networks / Media Scanning
- Community Tension Reports
- Reducing Youth on Youth Violence and anti-social behaviour through Rapid Response team in identified Hotspot zone (identified by partners)

How will we do this?

Youth Offending

- Identification and Priority Cohort – the key trigger for diversion and engagement targeted support and enforcement measures will be based on intelligence about young people shared between key partners and stakeholders.
- Young people (8-17 years) at risk of involvement in violent behaviour (including victims of SYV); those seeking a route out of violence and gang culture; and those being considered for enforcement measures due to refusing to exit violent lifestyles.
- Referrals will continue to come from schools to the Social Inclusion Panel and support will extend to siblings of the target cohort as well as children of adult offenders via the

Youth Inclusion Support Programme. The Youth Offending Prevention Service will build on its existing referral mechanisms for parents and self-referrals.

- We will also build on the Council's current arrangements for ASB enforcement measures and Gang Injunctions to ensure that young people have access to support services to prevent further escalation.
- Young people supported through diversion and engagement will be formally assessed using the Youth Justice Board's assessment framework. Assessments will aid the development of integrated action plans for each young person, determine and manage risks, taking into account safeguarding concerns.
- Interventions will be initiated via letter to both the young person and his/her guardian.
- Support available includes education, training, employment, accommodation (Police – Safe and Secure Initiative), substance misuse services, parental support, violent offenders/identity workshops, mentoring and positive activities, health and emotional wellbeing services and having a named key-worker.
- Early enforcement includes Behaviour Contracts (including exclusion zones and prohibitions), joint home visits and 'Buddi' monitoring tags.
- Civil enforcement includes Gang Injunctions, Parenting Orders, Anti-Social Behaviour Orders and Individual Support Orders.

Integrated Youth and Community Service

- The service will work in partnership with the police and respond to "Youth on Youth Violence" issues and engage them in to structured learning opportunities.

Troubled Families Programme

- The Troubled Families Programme will enhance the work of the Police and Youth Offending Team to broaden the offer of support and therapeutic intervention to the families of young people whose lives are affected by gangs. Outcomes are linked to the PBR element of the troubled families programme and focus primarily on reducing offending, increasing educational attendance and achievement and in getting young adults and their parents either into work or on the way to work.

Police

- The Police will use a range of activities in their approach to tackling Gangs and Serious Youth Violence. These will include activity analysis, weapons seizures, arrests, detections, search warrants, CHIS coverage and financial investigation.
- Produce Gang Related Intervention Profiles (GRIPs) on each individual which will include information on and from MATRIX analysis, reaching minimum threshold, intelligence coverage and whether they have been convicted in the past 6 months, charged in the past 3 months, under judicial restriction, named in proactive enquiry, a subject of financial investigation, engaging in a diversionary scheme and/or have no restrictions or current interventions in place.

What we will aim to achieve over the 3 years?

Over the next 3 years we will:

- Aim to alter the public's perception and increase both confidence and satisfaction
- Increase the number of gang nominal's in custody by 20% of the 140 on the Matrix
- Increase the number of those exiting gang offending
- Focus enforcement work on those who reject the offer of intervention
- Increase the use of the family intervention: proportion of gang nominal's supported within a Family Intervention Project
- Increase the proportion of those supported into Education, Training and Employment
- Provide meaningful community engagement and full multi-agency collaboration and communication
- Through early intervention improve PRU and school truancy rates of those in the cohort
- Develop effective Accident & Emergency data sharing
- Provide enhanced offender management for gang members
- Maintain a fast response to critical incidents
- Develop shared ownership; strong leadership; information sharing; assessment and referral and targeted services
- To be able to identify what success is for key agencies, young people, families, government and for those involved in serious youth violence

Priority B:

Anti-Social Behaviour (including Arson)

Why is it a priority?

Anti-social behaviour (ASB) is both a National and Local priority. ASB can include behaviour such as noise, graffiti, abandoned cars and threatening behaviour which affects people's quality of life and can leave them feeling intimidated, angry or frightened. Tower Hamlets Community Safety Partnership works with all its partners to reduce levels of ASB so that residents and people, who work and visit the borough, maintain a good quality of life.

Responsible Board/CSP Sub-group:

Borough Crime Tasking Group
Safer Communities Partnership Co-ordination Group

What will we aim to achieve this year?

- To better identify all incidents reported to partners in conjunction with Police data, to better identify all victims of ASB within the borough and provide a quality response to their needs.
- To reduce the number of anti-social behaviour incidents recorded on the Police CAD System by 10% based on end of year figures for 2011-2012. This equates to approximately 2356 calls less (**19176/16810**) for 2012-2013.
- Reduce the number of anti-social behaviour incidents reported to Registered Social Landlords
- Reduce the number of incidents of Vandalism

How will we measure success?

- Number of Police Computer Aided Despatch (CAD) calls for ASB**
- Newly implemented (MPS) Airspace* data
- LBTH ASB data
- RSL ASB (no. of ASB incidents reported) data
- Number of young people engaged by the Youth Inclusion and Support Programme
- Number of ASB referrals securing EET destination through Targeted Support Team.
- Reducing Youth on Youth Violence and anti-social behaviour through Rapid Response team in identified Hotspot zone (identified by partners)
- Reduction in calls

*Airspace is a new IT based system that provides an enhanced method of identifying ASB that could not previously be identified and will enhance the Metropolitan Police's ability to resolve such identified problems

** Using Metropolitan Police definition of Anti-social behaviour

- Improved Public Confidence and Victim Satisfaction
- Number of incidents of Criminal Damage
- Number of Arson incidents – All Deliberate Fires
- Number of Accidental Dwelling Fires
- Number of Primary Fires in Non-Domestic Buildings
- Number of incidents of Vandalism

How will we do this?

- Increasing Police officer numbers to Neighbourhood Policing Teams through the implementation of the MPS Local Policing Model, combined with Partnership Funded officers and new methods of identifying individuals and areas. e.g. Airspace
- Regular meetings between Police, Fire Brigade, Council ASB and Integrated Youth & Community Service (especially Rapid Response Team) Teams together with key partners (including Housing Providers) to prioritise identified problems and tasking of resources committed to the reduction of anti-social behaviour
- Better identification of ASB through enhanced information sharing, improved data collection, recording and analysis
- Contact will be made with 100% of victims of ASB reported to the Police within 24 hours of initial call. Agreements will be made with victims to ensure quality service is provided to resolve their concerns and prevent on-going incidents
- All activity will be recorded on new systems to identify individual team performance
- Every cluster/ward team will be measured as to their success and levels of intervention
- Better use and co-ordination of civil tools and legislative powers available to landlords to tackle ASB in neighbourhoods
- More use of informal tools, such as agreements and undertakings available to landlords to prevent and tackle ASB
- Improved relationships between police, council workers and partners, such as housing providers through co-location will improve identification of ASB, joint working and case resolution
- RSLs will explore opportunities to work in partnership to prevent crime and anti-social behaviour in their neighbourhoods and utilise secure by design principles
- Engaging 60% of ASB referrals to Integrated Youth & Community Service into enrichment and Positive Activities.
- Engaging young people into Universal services in their locality.
- Maximise young people's participation during school holiday period through Integrated Youth and Community Services programme / initiatives.
- Increasing the number of Tower Hamlets Enforcement Officers in order to build on the successful enforcement and reassurance patrols to tackle ASB and other community concerns

What we will aim to achieve over the 3 years?

- Through enhanced police and partnership activity we will seek a minimum 10% year on year reduction in the number of reported ASB
- We will identify ASB incidents initially reported as crime, ensuring ownership and commitment by their Safer Neighbourhood Team, so that all victims receive a quality service
- We will improve our standing from 2nd highest borough contributor of ASB in London to 5th highest or better
- Respond to new legislation and ensure any new powers for CSP agencies are utilised to prevent and respond to anti-social behaviour
- We will identify potential ASB perpetrators early, refer, develop a support/development plan and engage them onto positive activities through Targeted Youth Support Service
- Secure 90% of ASB referrals into EET destinations year on year
- Reduction in the Number of Incidents of Vandalism

Priority C:

Drugs and Alcohol

Please Note: Drugs and alcohol misuse is a known driver of property crime, by addressing this priority we expect this to have a positive impact on property crime in the borough.

Why is it a priority?

There is a clear link between dependent users of Class A Drugs (like heroin and crack cocaine) with burglary, robbery, theft from a person or vehicle (collectively known as Serious Acquisitive Crimes), fraud, shoplifting and prostitution, which they commit in order to fund the drug dependency.

The effects of alcohol on the body mean it is often more likely for the drinker to either be a victim or perpetrator of crime. Alcohol is often linked to both violence and anti-social behaviour. Its use is particularly linked to incidents of domestic abuse and violence.

Treatment for drug and alcohol users, particularly young people is important so that their health and well-being is safeguarded and they make a positive contribution to their local communities.

Responsible Board/CSP Sub-group:

Drug and Alcohol Action Team Board

What will we aim to achieve this year?

- Implement a multi-agency communications plan for service users and professionals which raises awareness of harm reduction & safe drinking levels; drug related harm & treatment services available; supports parents to address their child's drug and alcohol misuse
- Ensure school staff, pupils and parents receive substance misuse education
- Understand local trends in alcohol and drug consumption so that they inform the borough's Needs Assessment which in turn shapes service provision
- Report the number of young offenders screened and engaged by the YOT substance misuse worker
- Review and map prevention initiatives for both adults and children including referral and threshold criteria
- Strengthen primary care responses to substance misuse
- Increase the number of alcohol screenings in Police custody suites with referrals into treatment services
- Increase the number of drug users accessing targeted interventions who are identified via Police custody suite screening and widen the testing from Class A

- Improve the identification of and response to individuals presenting themselves to secondary care services including A&E
- Increase the number of 18-24 year olds referred and engaging in treatment for drug and alcohol problems
- Combat sales to underage drinkers including proxy sales including using young offenders as part of community reparation
- Disrupt the supply of drugs through effective enforcement
- Reduce the number of Property Crimes:
 - Reduce the number of Personal Robberies
 - Reduce the number of Residential Burglaries
 - Reduce the number of Thefts From Motor Vehicles
 - Reduce the number of Thefts of Motor Vehicles
 - Reduce the number of Thefts From a Person
- Reduce the number of incidents of Vandalism

How will we measure success?

- Number of Drug Intervention Programme (DIP) referrals that re-offend
- Number of drug users recorded as being in effective treatment
- Number of drug users successfully completing treatment
- % of individuals in alcohol treatment, demonstrating abstinence or improvement in alcohol intake at 6 month review
- Dealer a day programme – Arrests made
- Number of prison release clients referred and commenced treatment
- Number of DIP Criminal Justice System clients completing treatment
- Number of DIP clients re-offending after completing treatment
- Number of clients engaging with DIP, captured and referred via targeted testing
- Number of young people taking drugs and/or alcohol, in specialist treatment
- Number of Personal Robberies
- Number of Residential Burglaries
- Number of Thefts From Motor Vehicles
- Number of Thefts of Motor Vehicles
- Number of Thefts From a Person
- Number of incidents of Vandalism

How will we do this?

- Public Health working in partnership with Safer Communities and Children's Schools & Families Directorate to develop and implement the multi-agency communications plan will lead to a heightened awareness of services and referral mechanisms into those services.
- Provide training to schools, parents and peer educators on substance misuse education
- Conduct a Healthy Lifestyles Survey, analysis of GP drugs / alcohol data; hospital admissions; outreach data and treatment data to produce an annual Needs Assessment which will then inform and shape targeted provision.

- Holding mapping events for children's and adults services will enable us to identify all prevention initiatives and both their referral and threshold criteria.
- Deliver pilot sessions for invited services on the Behaviour Change Toolkit.
- The introduction of Alcohol Champions within the Royal London Hospital, having an Acute Trust alcohol strategy in place with buy in from a range of stakeholders and all wards and departments of secondary care having access to and implementing the guidance on 'the appropriate and effective management of alcohol dependent patients' and 'management of withdrawal from alcohol' will improve identification and response to individuals with alcohol problems.
- Implement targeted interventions for 18-24 year olds and ensure adult treatment providers offer an appropriate approach for them.
- Conduct underage alcohol sales operations which are supported by information and education for licensees on their legal obligations and follow up illegal sales with well-publicised prosecutions.
- Continue to deliver the 'Dealer a Day' operation which aims to arrest a drug dealer every day of the year.

What we will aim to achieve over the 3 years?

- Review provision and configuration of drug and alcohol treatment for adults; including a redesign of treatment provision; facilitate a widespread consultation and an equalities impact assessment
- 20% reduction in total number of 'key crimes', as identified in the London Crime Reduction Plan which includes:
 - Robbery
 - Residential Burglary
 - Theft from Motor Vehicles
 - Theft of Motor Vehicles
 - Theft from a Person
 - Vandalism
 - Violence with Injury

Priority D:

Violence (with a focus on Domestic Violence)

Why is it a priority?

Violent crime is defined by the Home Office as robbery, sexual offences and violence against a person (ranging from assault without injury to homicide). While the number of incidences of Most Serious Violence (GBH and above) in the borough has shown a significant decrease over the last 12 months, it has been counteracted by a 51% increase in the number of reported domestic violence offences and a 3% increase in other non-domestic violent offences. This increase in violence could be attributed to increased confidence in reporting, where in the past the incident would have gone unreported.

Domestic violence has serious consequences affecting both adults and children with documented evidence showing that domestic violence is already endemic in a relationship before it is reported to the police for the first time.

Particular focus will be placed on Domestic Violence within this priority as well as all of the 8 other strands of Violence Against Women and Girls (VAWG) contained within the borough's VAWG Plan. The definition of domestic violence and abuse now explicitly includes 16 - 17 year olds and incorporates a wide range of abusive and controlling behaviours including physical, sexual, financial, emotional and psychological abuse, which contribute to the increase in violence across the borough. The cross-cutting nature of the Violence Against Women and Girls agenda means that responsibility for tackling these issues falls across a wide range of different agencies. Co-ordinating service provision and ensuring clear governance and accountability for this agenda is therefore a key challenge and a priority for the borough.

Responsible Board/CSP Sub-group:

Borough Crime Tasking Group
Domestic Violence Forum

What will we aim to achieve this year?

- A reduction in the volume of non-domestic violence recorded Violence with injury compared with 2012/13 performance
- Achieving of Sanctioned Detection targets for the above crime types in terms of offences brought to justice
- Continued increase in the reporting of domestic abuse and sexual violence
- Developing partnership work across the borough to ensure that the Local Safeguarding Children Board's Safeguarding Policy is adhered to by all agencies

- Increase third party reporting by promoting the service and an increase in the number of sites
- Further development of an all-day DV One Stop Service
- Increase the number of DV perpetrators being referred to and accessing the IDAP Programme within the borough
- Run a violent offender group-work programme in the Youth Offending Team including an offensive weapon and joint enterprise session.
- Reduce the number of incidents of Violence with Injury
- Increased reporting of levels of sexual violence to the Haven, the Independent Sexual Violence Adviser and to East London Rape Crisis
- Increased identification of female genital mutilation (FGM) through health and community safety measures
- Increased identification of victims of trafficking or other forms of sexual exploitation

How will we measure success?

- Number of Most Serious Violence offences per 1000 of the population
- Most Serious Sanction Detection (SD) Rate
- Number of Gun Crimes
- Gun Crime Sanction Detection (SD) Rate
- Number of Knife Crimes
- Knife Crime Sanction Detection (SD) Rate
- Number of Assaults with Injury
- Number of incidents of Violence with injury
- Number of DV Murders
- Number of Domestic Violence Offences
- Domestic Violence Sanction Detection (SD) Rate
- Domestic Offence Arrest Rate
- Number of Rapes
- Rape Sanction Detection (SD) Rate
- Number of Serious Sexual Offences
- Other Serious Sexual Offences Sanction Detection (SD) Rate
- Reduce the amount of time Domestic Violence is experienced before it is initially reported to a specialist agency
- Number of individuals to MARAC again within 12 months of original referral
- % victim satisfaction rate of victim's cases coming through the Specialist Domestic Violence Court
- Number of service users who attend the DV One Stop Shop, Homeless Persons Unit and Barkentine DV drop-in services
- Number of young women reported as missing from care or at risk of sexual exploitation to children's services
- Number of women identified as having undergone FGM
- Number of women (14 plus) who have presented to sexual violence services in the borough

How will we do this?

- The Police will work to the 'action plans' for Violence with Injury and Domestic Violence which are designed to drive forward performance.
- The Council have recently recruited a Violence Against Women and Girls (VAWG) Strategy Manager (funded for 3 years) to develop the VAWG Plan across the 9 strands, working with services across the borough, to develop services and provide training on VAWG issues.
- Multi-agency support services developed to tackle all forms of VAWG including specific case management services to support women involved in prostitution.
- The Council will continue to develop partnership working with the Police, Health and the Voluntary Sector, to increase the reporting of domestic abuse by providing more reporting centres.

Domestic Violence and Hate Crime Team

- Holding the Domestic Violence Forum
- Co-ordinating The Tower Hamlets Multi Agency Risk Assessment Conference (MARAC): attended by key officers from the Police, Homelessness Service, Children's Social Care, Health, Probation, Victim Support, specialist domestic and sexual violence services, Drug/ Alcohol Services, Mental Health and Education services which meets monthly to review and plan action in identified high risk cases.
- Co-ordinating the Tower Hamlets' Prostitution Partnership (THPP) meetings: interagency meetings to support sex workers including a MARAC style meeting
- DV1 inter-agency referral form and DV database
- Support Partnership DV One Stop Shop at the Jagonari Centre
- Hold DV Drop in Surgery at the Barkentine
- Homeless Person's Unit DV Drop in Surgery
- Survivors' Network
- Specialist Domestic Violence Court Steering Group Meeting
- Support and give information to staff by providing:
 - Telephone advice & information
 - Resources and guidance
 - Training
 - Working with health and VAWG agencies to develop an appropriate response to tackling FGM, so-called 'honour' based violence, forced marriage, trafficking and dowry abuse

What we will aim to achieve over the 3 years?

- The Police will continue to work towards the MOPAC directive to achieve a 20% reduction in 'key crime' (Including Violence with Injury) by the end of 2015/16 performance year. The contribution to this performance through 2013/14 will be a 5%

Reduction in Violent Crime married with a 34% detection rate against the 2012/13 performance year.

- Reduce the length of time it takes individuals to report domestic abuse.
- Increase awareness of DV and increase their reporting of domestic abuse.
- Increased awareness of other forms of VAWG and increased reporting
- Increase training to service providers, so that all organisations are consistent in their approach to addressing issues of domestic abuse.
- Support organisations to increase their referrals to the MARAC, with a focus on 'high-risk' groups such as sex workers, those who are dependent on alcohol or drugs, carers and young people.
- Develop specialist health pathways for survivors of Female Genital Mutilation (FGM) and develop educational resources for schools as well as training for staff on how to respond in cases of FGM. Development of a multi-agency forum on FGM with public health, midwifery and the health trust
- Increase safety and health of street based sex workers as well as reducing associated ASB.
- Work with school staff, governors and parents to develop appropriate training resources to enable young people to increase their awareness of abuse and recognise when they are at risk in their own intimate relationships
- Work with young people to raise awareness around all forms of violence
- Support children's services to support young women (and men) that are at risk of sexual exploitation.

Priority E:

Hate Crime and Cohesion

Why is it a priority?

The Tower Hamlets Community Plan aims to make the borough a better place for everyone who lives and works here. The Borough's diversity is one of its greatest strengths with the richness, vibrancy and energy that our communities bring. As a partnership we are committed to build One Tower Hamlets, to tackle inequality, strengthen cohesion and build both community leadership and personal responsibility.

The borough is a diverse and tolerant place, where the vast majority of people treat each other with dignity and respect. Unfortunately there is a small minority of people who don't hold those same values and perpetuate hate. Hate crimes are committed on the grounds of prejudice against people who are different than the perpetrator in some way.

Preventing violent extremism and people becoming involved in it, is fundamental to achieving One Tower Hamlets. Our partnership approach has developed over the past five years and enabled us to tackle complex and contentious issues during that time.

Responsible Board/CSP Sub-group:

No Place For Hate Forum
Community Cohesion Contingency Planning and Tension Monitoring Group

What will we aim to achieve this year?

Tower Hamlets No Place For Hate Forum

We know that for some people difference is a frightening thing. In difference, they see a threat and that is when prejudice takes hold. Sometimes prejudice results in the abuse and violence that undermines the borough's proud tradition of diversity and tolerance.

The experience of prejudice and hate isn't limited to one particular group. Hate crimes are committed against people of different races, faiths/beliefs, sexual orientations, gender identities, ages and disabilities and other actual or perceived difference. The Tower Hamlets No Place for Hate Forum (THNPFHF) and partners aim to stamp out all forms of hate, and ensure that the borough is a safe place for everyone.

- In 2013/14 we aim to increase the reporting of hate across all strands and raise awareness of the impacts of hate through education and awareness.
- We will aim to raise awareness of disability hate crime, utilising suitable methods to engage with the community to build confidence and increase reports

- THNPFHF partners will deliver various activities throughout the year that all contribute to making this borough proud and tolerant of its diversity.

Community Cohesion Contingency Planning and Tension Monitoring Group (CCCPTMG)

The Council established the CCCPTMG in 2007. Its role has been to provide a wide-ranging key individual network of those who represent statutory, voluntary and community organisations in Tower Hamlets. The ability to have a network of individuals prepared to respond in real time to critical incidents is a pivotal part of an effective emergency response. In 2013/14 we aim to:

- Plug gaps that we may have in the membership of the group in order to strengthen its impact in protecting local communities.
- Continue to respond to cohesion related issues in the borough in real time.
- Undertake one off seminars to look at specific threats to cohesion in order to both increase our learning of the threat and to identify what the boroughs response will be to reduce the threat.
- Undertake a piece of research on Islamophobia and how it impacts the local community.

Preventing Violent Extremism Programme Board

- Deliver phase two of Building Community Resilience project, engaging at least 70 young people in the borough in workshops to build their resilience to extremism
- 'Deliver the Connecting with the next generation' project to provide continuing professional development opportunities for teaching staff in madrasahs to develop their teaching skills and knowledge and understanding of the safeguarding agenda

How will we measure success?

- Number of Hate Crimes (overall and broken down into 7 strands of hate)
- Racist Sanction Detection (SD) Rate (overall and broken down into 7 strands of hate)
- % of hate crime cases coming to the Hate Incidents Panel where formal action is taken
- % of people who believe people from different backgrounds get on well together in their local area

How will we do this?

Tower Hamlets No Place For Hate Forum

- The Hate Incident Panel will continue to ensure that key agencies meet regularly to review and plan effective actions, share information effectively and swiftly to manage responses to hate incidents. Agencies including the Council, Police, Legal Services, Housing Associations, Victim Support and Youth Services will ensure that a co-

ordinated and more structured response, gives out the message to offenders that we will not tolerate hate and they will be held accountable for their actions.

- The Hate Incident Panel will aim to increase the percentage of hate crime cases reviewed at the Panel, where formal action is taken (baseline to be set in March 2013).
- Free advice and guidance will be offered to non-council services (including Registered Social Landlords (RSLs)) will result in a more collective response to hate incidents across the borough.
- The Panel will continue to encourage RSLs to refer cases and access appropriate advice when investigating cases.
- The Panel will support the Police in achieving their targets for Racist Sanction Detection (SD) Rate and Homophobic Sanction Detection (SD) Rate.

Community Cohesion Contingency Planning and Tension Monitoring Group (CCCPTMG)

- The CCCPTMG will continue to meet on a 6 weekly basis with emergency meetings taking place if and when needed to discuss imminent threats to cohesion. The group will also look at increasing its membership to ensure that all sections of the community are being engaged with and are part of the discussion on cohesion related issues.

Preventing Violent Extremism Programme Board

- The preventing Violent Extremism Programme Board will continue to meet every quarter. In addition to this we also hope to set up an operations group for frontline managers in relevant services to engage with frontline staff in relation to the Preventing Violent Extremism agenda.

What we will aim to achieve over the 3 years?

Tower Hamlets No Place For Hate Forum

- We will maintain and further develop the Third Party Reporting Project, by delivering refresher training to existing centres and recruiting new significant sites with established links and trust within their community to become Third Party Reporting Centres. Currently the Reporting Centres reflect the hate crime strands and include Age Concern, Dellow Centre, Real (formerly Disability Information Training Opportunities), London Muslim Centre, New Start, Positive East, Praxis, Step Forward Tower Hamlets, Victim Support, One Stop Shops, City Gateway and Young People's One Stop Shop.
- In 2013/14 we aim to increase reports via the Third Party Reporting Centres by 13% compared to the current baseline of 80 Reports as of February 2013. Over the 3 years we aim to increase third part reporting by 36%.
- Tower Hamlets No Place For Hate Pledge – we will continue the campaign which promotes an established clear message to the community. The campaign will link to and support national and international campaign and local festivals, highlighting

clearly that the partners will not tolerate hate in any form or nature in our diverse and cohesive borough, that is 'One Tower Hamlets'.

- The Forum will continue to promote the 'Pledge' at outreach events in the community whilst delivering workshops, at training and awareness stalls encouraging as many individuals and organisations to make a pledge against hate.
- The Forum aspires to increase the sign up of individuals and organisations to the pledge by 50% per year over the next three years when compared to the February 2013 baseline.

Community Cohesion Contingency Planning and Tension Monitoring Group (CCCPTMG)

- Maintain its role in monitoring local tensions and responding to threats to cohesion that may arise
- Aspires to ensure that we continue to increase, on an annual basis, the percentage of people who believe people from different backgrounds get on well together in their local area
- Tackle negative media perceptions that the borough attracts cohesion related issues and tensions.

Preventing Violent Extremism Programme Board

- Targeting social, peer and educational support and advice to individuals identified as at risk of involvement in extremist activity and violence
- Strengthening community leadership to enable key individuals and organisations to challenge/disrupt extremist ideology

Cross-Cutting Priorities

When the Strategic Assessment and Public Consultation findings were presented to the Community Safety Partnership, they recognised that there were a number of areas of work that cut across other priority areas. Action taken to address the stand-alone priorities would be impacted by and impact upon these cross-cutting areas. For this reason the Community Safety Partnership agreed that this Plan would also contain the following two cross-cutting priorities:

Public Confidence

Reducing Re-offending

DRAFT

Cross-Cutting Priority 1:

Public Confidence

Why is it a priority?

Public Confidence is a Government priority and a measurement of the level of Confidence in Policing and the wider partnership. Reducing the community's fear of crime is therefore a priority as how we deal with crime, disorder and anti-social behaviour impacts on the community's well-being, feeling confident to report incidents and support future investigations and prosecutions.

The perception of, and fear of both crime and ASB directly impacts on public confidence. Being a victim of or knowing a victim of a Serious Acquisitive Crime (robbery, burglary, car crime and theft), has a particular impact on public confidence and can generate negative perceptions of both agencies and particular geographical areas or estates in the borough.

Responsible Board/CSP Sub-group:

Confidence and Satisfaction Board

What will we aim to achieve this year?

- Ensure that residents and people who work in or visit the borough, have a realistic understanding of the levels of crime and disorder within the borough, so that their fear does not become disproportionate
- Encourage people to take reasonable steps to protect themselves, their neighbours and their property
- Ensure that people continue to report crime, disorder and anti-social behaviour to the relevant agencies and that they are confident their issues will be dealt with
- Reduce the level of reported ASB and Crime, including Serious Acquisitive Crime, which are known drivers of public confidence
- Improve the public's perception of police by 20% and improve satisfaction with the policing service provided

How will we measure success?

- % of residents who feel the local Council and Police deal effectively with local concerns about anti-social behaviour and crime
- Perceptions of Crime and ASB as measured by MPS and Council data reduced based on 2012/13 end of year performance data.
 - Local concern about ASB and Crime a) Drunk and rowdy behaviour in a public place

- Local concern about ASB and Crime b) Vandalism and Graffiti
- Local concern about ASB and Crime c) Drug use or drug dealing as a problem
- Local council and police are dealing effectively with local concerns about anti-social behaviour and crime
- Year on year improvement in published performance data relating to Confidence and Satisfaction measures
- Number of Property Crimes:
 - Number of Personal Robberies
 - Number of Residential Burglaries
 - Number of Thefts From Motor Vehicles
 - Number of Thefts of Motor Vehicles
 - Number of Thefts From a Person
- Number of incidents of Vandalism

How will we do this?

- Continue and improve partnership working to provide a quality response to all victim needs and identified crime trends.
- Respond to every victim's call for help by responding in a timely fashion while delivering a quality service.
- Contact every victim of ASB to establish how we can support them better, to improve theirs and their community's quality of life.
- Contacts a range of victims of crime to identify the level of service delivered and identify opportunities to improve service delivery.
- Restructure local policing by moving detectives into front line policing, so we improve primary investigation of reported crime.
- Reduce the Number of Personal Robberies
- Reduce the Number of Residential Burglaries
- Reduce the Number of Thefts From Motor Vehicles
- Reduce the Number of Thefts of Motor Vehicles
- Reduce the Number of Thefts From a Person
- Reduce the number of incidents of Vandalism

What we will aim to achieve over the 3 years?

- 20% Increase in Public Confidence
- Reduce the Volume of Reported Crime and ASB each year from a baseline measured on 2012/13 financial year.
- Improve our Confidence and Satisfaction Performance data by 2 percentage points per year based on 2012/13 financial year.
- Through better contact with victims, we will improve victim care and increase our Public Confidence and Satisfaction performance that will contribute together with other activity to show Tower Hamlets as the 'best in class' within inner London.
- 20% total reduction in Property Crime and MOPAC's 'key crimes' as a group:
 - Reduction in the Number of Personal Robberies
 - Reduction in the Number of Residential Burglaries
 - Reduction in the Number of Thefts From Motor Vehicles
 - Reduction in the Number of Thefts of Motor Vehicles

- Reduction in the Number of Thefts From a Person
- Reduction in the Number of incidents of Vandalism

Cross-Cutting Priority 2:

Reducing Re-offending

Please Note: Reducing the re-offending of prolific offenders will have a positive impact primarily on the level of property crime in the borough.

Why is it a priority?

Partners in Tower Hamlets are committed to working together to reduce crime and disorder, and tackling deprivation, worklessness and social exclusion. We know that 50% of all crime is committed by people who have already been through the criminal justice system – re-conviction rates for some offenders can reach over 70%.

In Tower Hamlets, like most boroughs there are a relatively small number of people who carry out the majority of criminal acts. By targeting resources at these prolific offenders, to improve the level of support provided for those who wish to change their lives in a positive way and fast-tracking the prosecution process for those who refuse to change, we aim to reduce the number of prolific offenders in the borough and make it a safer environment for everyone.

By reducing the number of prolific offenders in the borough, we will directly impact the levels of crime and anti-social behaviour which will particularly lead to a reduction in Serious Acquisitive Crime (Personal Robbery, Residential Burglary, Theft from Motor Vehicle, Theft of Motor Vehicle and Theft from a Person).

Responsible Board/CSP Sub-group:

Integrated Offender Management Board
Youth Offending Team Management Board

What will we aim to achieve this year?

- Develop our joint understanding and commitment to Integrated Offender Management and review our Reducing Reoffending Strategy
- Reduce the level of recorded crime within the borough
- Reduce the Number of Personal Robberies
- Reduce the Number of Residential Burglaries
- Reduce the Number of Thefts From Motor Vehicles
- Reduce the Number of Thefts of Motor Vehicles
- Reduce the Number of Thefts From a Person
- Reduce the Number of incidents of Violence with Injury
- Reduce the Number of incidents of Vandalism
- Reduce the number of first time offenders entering the criminal justice system
- Reduce the re-offending rate of Prolific offenders

- Reduce the re-offending of young people leaving custody
- Engage more closely with and support identified criminals to encourage them to desist from their criminal lifestyle
- Provide targeted treatment and support for identified offenders, i.e. housing, benefits and treatment

How will we measure success?

- Number of Youths not entering Criminal Justice System through Triage
- Proven reduced re-offending by offenders supported by Youth Offending Service
- Number of Offenders being supported by key agencies to help them disengage from criminal lifestyle
- Number of Priority Prolific Offenders engaging with the PPO Scheme who no longer have criminal offences recorded against them
- Number of Offenders under Probation supervision, living in settled and suitable accommodation at the end of their order/licence.
- Number of Offenders under Probation supervision in employment at the end of their order/licence
- Adult re-offending rates for those under Probation supervision
- Percentage of offenders under Probation supervision living in settled and suitable accommodation at the end of their order or license
- Percentage of offenders under Probation supervision in employment at the end of their order or license
- Number of Personal Robberies
- Number of Residential Burglaries
- Number of Thefts From Motor Vehicles
- Number of Thefts of Motor Vehicles
- Number of Thefts From a Person
- Number of incidents of Vandalism
- Number of young people leaving custody who go on to re-offend

How will we do this?

- Better identify youths who are suitable for non-Criminal Justice outcomes by improved triage processes and introduce conditional cautioning as a disposal option.
- Improve drug testing activity in Police custody, to identify potential offenders and provide support / treatment
- Improve partnership engagement to better identify third sector agencies that can support identified offenders who require help to escape their life of crime.
- Secure increased funding and resources aimed at offenders in the community to reduce/cease re-offending
- Enhance our daily contact with named individuals through the Integrated Offender Management Team (Police, Probation and Drug Intervention Project), to ensure their on-going commitment to a non-criminal lifestyle

What we will aim to achieve over the 3 years?

- Increase the level of engagement (through IOM Board) provided by partner agencies and Third sector, to help identified individuals escape their criminal lifestyle
- Identify the number of offenders entering custody who have a drug habit, through targeted drug testing and providing appropriate support mechanisms and referrals
- Reduce the number of Youths entering the Criminal Justice System by providing alternative disposal options (CJB Data)
- Reduce the number of Adult Prolific and Priority Offenders (PPO) who commit crime, aiming at a 10% reduction each year from the 2012/13 baseline
- Show reduction in recorded crime for identified / supported offenders
- 20% reduction in MOPAC's 'key crimes' including Property Crime, as identified in the London Crime Reduction Plan:
 - Robbery
 - Residential Burglary
 - Theft from Motor Vehicles
 - Theft of Motor Vehicles
 - Theft from a Person
 - Violence with Injury
 - Incidents of Vandalism
 - Re-offending of young people leaving custody

APPENDIX 2 - Community Safety Plan - Public Consultation Report

Executive Summary

The Tower Hamlets Community Safety Partnership, via the Community Safety Team in LBTH conducted an extensive public consultation over 5 weeks from May to June 2012, in line with the Community Safety Plan 2013 Consultation and Development Plan, the timetable of which can be found in Appendix 3.

Consultees were contacted via press articles, letters and email alerts. They were given the opportunity to attend their local SNT Public Meeting, a borough wide Public Meeting or a Members' Consultation Session (if they were an elected member), to reply in writing /email or via the dedicated webpage. This consultation asked members of the public (residents and business people), partnership and community groups/organisations for their top three community safety priorities.

In total 1,013 responses were received which have been grouped by how they were collected (due to recording issues with web-based consultation). Those groups are Public Meetings Results and Web-based Results.

Public Meetings Top 3:

| | | |
|----|-----------------------------|----|
| 1) | Drugs and Alcohol | 94 |
| 2) | Anti-Social Behaviour (ASB) | 89 |
| 3) | Youth Crime | 55 |

Web-based Top 2 Crime Priorities:

| | | |
|----|---------------------------|-----|
| 1) | Serious Acquisitive Crime | 147 |
| 2) | Violence | 146 |
| 3) | Youth Crime | 120 |

Web-based Top 2 Crime Themes:

| | | |
|----|-----------------------------------|-----|
| 1) | Anti-Social Behaviour (ASB) | 209 |
| 2) | Reducing Re-offending | 121 |
| 3) | Community Cohesion and Hate Crime | 113 |

Results in Total:

Based solely on the number of selections by members of the public in Tower Hamlets across all the different collection methods, the top 3 (highlighted in yellow below) community safety priorities for the Community Safety Plan 2013 are:

| | | |
|-----|-----------------------------------|-----|
| 1) | Anti-social Behaviour (ASB) | 298 |
| 2) | Serious Acquisitive Crime | 200 |
| 3) | Drugs and Alcohol | 196 |
| - | Violence | 196 |
| 5) | Youth Crime | 175 |
| 6) | Integrated Offender Management | 130 |
| 7) | Community Cohesion and Hate Crime | 124 |
| 8) | Public Confidence | 104 |
| 9) | Violence Against Women and Girls | 88 |
| 10) | Other | 28 |

Consultation Objectives

- To obtain views on the current levels of crime, disorder, substance misuse and re-offending rates within Tower Hamlets.
- To identify community safety priorities from members of the community, partner agencies (including the 3rd sector) and the Community Safety Partnership (Safe and Cohesive CDPG) for 2013 onwards*.
- To include analysis of these perceptions on levels of crime, disorder, substance misuse and re-offending rates and subsequent priorities will then be included in the 2012 Community Safety Partnership's Strategic Review. This will then be used to shape the Community Safety Plan 2013 onwards* before entering into formal approval mechanisms.

Key Messages

- Community safety is one of the Mayor's five priorities
- Community safety and cohesion are a priority for the Partnership.
- The 2012 Community Safety Partnership Plan Priorities
- This consultation is their opportunity to shape crime, disorder and cohesion priorities for 2013 onwards.
- Take part in the consultation to help make Tower Hamlets a safer place

Target Audiences

- Residents
- Members
- Businesses
- Partners (inc. Police/NHS/THH/Third Sector)
- Young people
- Support/Advice agencies
- Hostels
- Media

Methods:

Community Safety Partnership (Safe and Cohesive CPDG)

Key senior officers from the Community Safety Partnership (Police, Council, Probation, Fire Service and Health) set up a Strategy Development Group to ensure that the Community Safety Plan was produced and have been heavily involved in both the design and the content of the Strategic Assessment and the Community Safety Plan from the outset.

The Strategic Assessment 2011, draft Community Safety Plan 2012/13 and this Consultation Plan were presented to the Community Safety Partnership on 18th October 2011, where the Assessment and Consultation Plans were approved and the draft Plan was signed off pending feedback from the Consultation.

* The length of the Community Safety Plan is determined at a local level by Statutory Authorities within the Community Safety Partnership and can cover either 1, 3 or 5 years.

Press Release

In May 2012 a press release was issued launching the public consultation. Within the release were quotes from the Co-Chair of the Safe and Cohesive Community Plan Delivery Group (Borough Commander) and the Mayor of Tower Hamlets, Lutfur Rahman.

Letters

In May 2012, 481 letters were sent out on behalf of the chairs of the CSP. Each letter included the 2012/13 Plan's priorities, asked for their top 3 borough priorities and feedback either by letter or through the consultation webpage (mytowerhamlets) were sent, to the following:

- Residents (identified through previous consultation exercises)
- Residents Groups including TRA's, Ward Panels and Neighbourhood Watch
- Subgroups of the Community Safety Partnership (Safe & Cohesive CPDG):
- Drug and Alcohol Action Team Board
- Youth Offending Team Management Board
- Safeguarding Boards (Adults and Children)
- Integrated Offender Management Board
- Equality and Cohesion Board
- Violence Against Women and Girls Board
- Confidence and Satisfaction Board (Police Board)
- Borough Criminal Justice Group

By contacting the above boards/subgroups, we consulted the agencies below, who are all members of them:

- Tower Hamlets Housing Forum (all Registered Social Landlords invited)
- British Transport Police
- NHS
- Voluntary Sector
- Faith Organisations
- Community Groups
- Canary Wharf Group
- Hostels
- Victims via Victim Support
- One Tower Hamlets
- Support Groups
- Transport For London
- Jobcentre Plus
- Veolia Environmental Services
- Disability groups
- Schools and Youth Centres
- Older peoples' centres

Members Briefing

An article publicising the Police public meetings appeared in weekly Members' Briefing. The Police public meetings were the face to face consultation method for the partnership on the priorities, which gave local police and representatives from the council the opportunity to explain the current priorities (both local and borough-wide) to residents in the context of the current performance. These events were Police lead due to them taking place during a by-election and London Mayor election period.

Consultation Events:

Police and Community Safety Board – Executive on 18th July, were given a presentation of CSP Plan Development Schedule, and the options for 2013 onwards community safety priorities. This is the first time that the executive board has been asked to give their comments on the priorities before the plan has been written, as in the past they have been consulted on the draft Plan. They were asked for their opinion on the current levels and asked for their priorities for the next Plan period (likely to be 1, 3 or 5 years) based on the 2012-13 Plan's Priorities. Most of the members had already given their personal priorities via the public consultation. The board discussed the mechanisms for the Plan's delivery, development and strategic review of performance.

Borough Café Connect event took place on Thursday 21st June in Shadwell. This featured presentations from the Deputy Mayor for Community Safety and the Borough Commander, both Co-chairs of the Community Safety Partnership. Residents from across the borough were presented with the current community safety priorities, the current levels of crime and disorder. They then took part in a table top discussion exercise on each community safety priority which focussed their thoughts on tackling them in partnership (residents and agencies). This exercise enabled them to make informed decisions on their top 3 priorities for the 2013 Plan. The event was attended by 33 residents which also reflected the social makeup of the borough.

Community Safety Road-shows - 26th April until 14th June. These were hosted by the Police Safer Neighbourhood Teams on a local basis, with support from LBTH Community Safety officers regarding the CSP Priority Consultation session. It gave the Partnership an opportunity to inform residents on the CSP Plan 2012/13 priorities and the current levels of crime, disorder/anti-social behaviour, substance misuse and re-offending rates. The residents were able to comment on these levels and make informed recommendations for the borough's top priorities 2013 onwards. The Road shows' ultimate aim was to give residents the opportunity to set their local Public Set Priorities and identify ways to tackle them.

In total there were 12 Police Public Meetings with attendance ranging from 7 to 23 residents. The overall attendance was 114.

Members Consultation Event – Wednesday 1st August. This enabled the elected members to contribute their own top three community safety priorities for the borough, prior to the production of the Strategic Review. In the past members have been consulted through the committee approval process once the report has already been approved by the Community Safety Partnership and then the formal council process. 6

elected members attended the event, 4 staying from start to finish and a further 2 who had to attend other council meetings. Of those 6, 4 completed the 'Top 3 Survey'

Website

A dedicated consultation page on Tower Hamlets Council's webpage was operational during the 5 week consultation period. The mytowerhamlets webpage facilitated this element of the public consultation and the benefit of this system is that it is the borough's consultation and communication tool. The Mytowerhamlets system also sent out alerts requesting responses from all members of the community who have already registered for a mytowerhamlets consultation.

The public consultation ended on Friday 22nd June. In total there were 862 respondents to the mytowerhamlets web-survey.

Media

Consultation launch article in East End Life and media/press release, asking community to take part in consultation and reminder to appear week prior to consultation ends.

****Key notes to consider when analysing the public consultation:**

The public consultation set out to inform the public of the 2012/13 borough community safety priorities. In all correspondence, meetings and events the public and partners were asked to choose their top 3 priorities from the list of current priorities or if not present to state other and give further details.

A significant flaw became apparent during the set-up of the mytowerhamlets page, that webpage design would not allow us to ask the question of their top 3 priorities in such a simplistic manner. The solution was to break the question up into two, this would be to identify their Top 2 Crime Priorities from (Violence, Serious Acquisitive Crime, Youth Crime, Violence Against Women and Girls, Drugs and Alcohol and/or Other). They were then asked to identify their Top 2 Crime Themes from (Reducing Re-offending, Antisocial Behaviour, Community Cohesion, Public Confidence and/or Other).

While those who attended a public meeting and gave their top 3 priorities had the opportunity to ask questions about each option and were also given information on the current local and borough levels of crime and disorder, those who were directed to mytowerhamlets web survey were not able to discuss the priorities further with so-called experts to enable them to make a truly informed decision on their top 3 (or top 4 as it turned out).

Also worth pointing out before we look at the actual results, is that due to the mytowerhamlets survey splitting the list of priorities into two questions, with each answer option presented in a series of pages, it did not allow the respondent to see all the options in full view and then make a decision weighing up all their options. With this in mind, we will look at the findings from the two different collection methods separately:

- 1) Public Meetings (Police Public Meetings, Cafe Connect Event and Elected Members Consultation Meeting)
- 2) Webpage Based Survey (mytowerhamlets)

Results

Public Meetings

Public meetings took place locally in the borough from 24th April to 14th June, in 12 areas which mirrored the areas managed by Police Safer Neighbourhood Sergeants. Tower Hamlets has 17 co-terminus electoral wards and Police Safer Neighbourhood Teams, however following a review of police SNT staffing structure, some SNTs share a Police Sergeant. Therefore it made sense given that the sergeant was running the police public meetings, that they should only host one covering their SNT/s area. In total 114 people at these events completed the top 3 priority survey.

A borough-wide consultation event took place on Thursday 21st June. This was hosted by the 2 co-chairs of the Community Safety Partnership. Residents and representatives from the Voluntary/Third Sector were all invited to take part. In total 33 people at these events completed the top 3 priority survey.

In total 147 people attended during the course of 13 events. Each person was asked to mark their top 3 priorities from the current priorities on the paper survey and if they chose 'Other', they were asked to specify what that other priority was.

The results from the Police led Public Meetings are:

| | | |
|---------|-----------------------------------|----|
| (1) | Drugs and Alcohol Abuse | 80 |
| (2) | Anti-social Behaviour | 78 |
| (3) | Serious Acquisitive Crime | 47 |
| (4) | Violence | 39 |
| (5) | Youth Crime | 36 |
| (6) | Public Confidence | 26 |
| (7) | Violence Against Women and Girls | 15 |
| (8) | Community Cohesion and Hate Crime | 7 |
| - Other | | 7 |
| (10) | Integrated Offender Management | 6 |

Respondents who chose 'other' listed the following:

More supervised play areas for school children
Crime and the Elderly (2)
Reassure vulnerable older people
Terrorism
Gangs
Hate Crime
Domestic Violence
Need an Older Peoples' Champion / Mayor / Ambassador

Borough Café Connect Event

This consultation event was held from 6pm – 8.30pm on Wednesday 21st June in the Tarling East Community Centre was part of the broader consultation programme. This event was hosted by the Co-Chairs of the Community Safety Partnership (Chief Superintendent Dave Stringer, Borough Commander and Deputy Mayor Cllr Ohid Ahmed) and included presentations on levels of crime and disorder, recent achievements and current priorities.

The two main parts of event concerning the consultation were a table based discussion on each of the current crime and disorder priorities, which aimed at thought provoking on challenges and opportunities for the Community Safety Partnership in the coming years and finally to obtain their top three borough community safety priorities.

33 members of the public, including local youth club members, Neighbourhood Watch co-ordinators, probation workers in the local community, students from the local university and residents attended the event. Each took part in the table top discussions and submitted their top 3 priorities. The feedback from the table top exercise is attached in Appendix 2.

Top 3 Priorities (Results):

| | | |
|-----|-----------------------------------|----|
| 1) | Youth Crime | 16 |
| 2) | Drugs and Alcohol | 10 |
| 3) | Violence | 10 |
| 4) | Anti-Social Behaviour | 9 |
| 5) | Violence Against Women and Girls | 8 |
| 6) | Serious Acquisitive Crime | 6 |
| 7) | Public Confidence | 6 |
| 8) | Community Cohesion and Hate Crime | 4 |
| 9) | Integrated Offender Management | 3 |
| 10) | Other | 1 |

Members Consultation

A Members Consultation Event took place on Wednesday 1st August. This enabled the elected members to contribute their own top three community safety priorities for the borough, prior to the production of the Strategic Review. 6 elected members attended the event, 4 staying from start to finish and a further 2 who had to attend other council meetings. Of those 6 members, all gave specific issues affecting their ward, but only 4 completed the 'Top 3 Survey'.

The results from the members' completed surveys are:

| | | |
|-----|----------------------------------|---|
| (1) | Drugs and Alcohol | 4 |
| (2) | Youth Crime | 3 |
| (3) | Anti-Social Behaviour | 2 |
| (4) | Violence | 1 |
| - | Violence Against Women and Girls | 1 |
| - | Public Confidence | 1 |

Web based Consultation

Over the 6 week consultation period, 862 people responded to the web based consultation, responding to the two separate questions as follows:

Top 2 Crime Priorities

| | | |
|-----|----------------------------------|-----|
| (1) | Serious Acquisitive Crime | 147 |
| (2) | Violence | 146 |
| (3) | Youth Crime | 120 |
| (4) | Drugs and Alcohol | 102 |
| (5) | Violence Against Women and Girls | 64 |
| (6) | Other | 12 |

People who chose 'Other' and detailed their other priority stated the following:

- Any form of theft
- Anti-social
- Petty crime carried out by companies like builders and shoddy work but still charging
- Loitering in car parks day and night drinking, taking drugs and selling them
- Government cuts in police services and cuts to youth and pensioner services due to legislation
- Complaint about survey not working
- Drug dealing
- Anti-social behaviour
- Social exclusion and isolation
- N/A
- Violence is top priority and this should include terrorism which must be at the top given our location between the Tower of London and Canary Wharf

Top 2 Crime Themes

| | | |
|-----|-----------------------------------|-----|
| (1) | Anti-social Behaviour | 209 |
| (2) | Reducing Re-offending | 121 |
| (3) | Community Cohesion and Hate Crime | 113 |
| (4) | Public Confidence | 71 |
| (5) | Other | 8 |

People who chose 'Other' and detailed their other priority stated the following:

- Littering of school children and parents outside my house and in the car park
- Safer streets
- Police, Youth and Drug Service cuts as a result of the new government legislation
- Your survey is useless all of these things are important to us!
- Prevent drug dealing in estates
- Crimes against women and serious acquisitive crime....as before
- More Police
- Reducing exclusion from society with ethnic minorities in particular through better education and involvement of women in such groups and their greater involvement in the community, greater promotion of social cohesion by ensuring the promotion of common language, English, to ensure all communities, both male and female, can communication among one another.

*****Please note:** due to the design of the online survey, people were still presented with the opportunity to list their other choice, even if they had not chosen the 'Other' option/answer. 116 people chose to submit an answer to 'Other' even though they had already chosen their top two priorities in each question. Whilst technically these can be included in the responses/findings of the survey they cannot be included in the official results as some people therefore had chosen their priorities twice.

Additional comments under 'Other' tend to reflect the top priorities, although they refer to specific types of issues within those broad offence/crime themes/types ie. Youths causing ASB, which is a sub category of Anti-Social Behaviour; bicycle theft which is a sub category of Acquisitive Crime.

Equalities Analysis of Respondents

Of the 862 people who responded electronically on the Mytowerhamlets survey, 238 completed it correctly, 56 filled out the survey incorrectly (more or less than the requested two responses per question) and a further 568 gave no responses to the questions (did not select other as their answer but then completed the other section). This makes it difficult to analyse the overall 862 respondents for their answers, so the following analysis is based on those 294 who completed the survey correctly/incorrectly who gave responses.

Ethnicity

| Ethnicity | Respondents | % of survey | Ethnic group proportions taken from GLA 2011 PP |
|--------------------------|-------------|-------------|---|
| White | 184 | 65.71% | 48.8% |
| Bangladeshi | 57 | 20.36% | 34.3% |
| Black Caribbean/African | 11 | 3.93% | 6.1% |
| Indian | 11 | 3.93% | 2.1% |
| Other | 17 | 6.07% | 8.8% |
| Did not specify | 14 | 4.76% | |
| Total respondents | 294 | | |

Compared to ethnicity figures from the Greater London Assembly, White people were overrepresented in responding to the survey, all other ethnic groupings except Indian were underrepresented.

Gender

| Gender | Respondents | % of survey | Census 2011 |
|--------------------------|-------------|---------------|---------------|
| Female | 111 | 42.0% | 48.5% |
| Male | 153 | 58.0% | 51.5% |
| Total respondents | 264 | 100.0% | 100.0% |

Males slightly overrepresented in the survey sample by 6.5 percentage points

Sexual Orientation

| Sexual orientation | Respondents | % |
|---------------------------|-------------|-------------|
| Heterosexual | 191 | 65.0% |
| Prefer not to say / Blank | 80 | 27.2% |
| LGBT | 23 | 7.8% |
| Grand Total | 294 | 100% |

No reliable comparator information for the borough as a whole and so we cannot talk about representation, though 7.8% is consistent with some estimates that range from 4 to 9% of residents

Disability

| Disability | Respondents | % of survey |
|---------------------------|-------------|-------------|
| No | 233 | 79.3% |
| Yes | 17 | 5.8% |
| Prefer not to say / Blank | 44 | 15.0% |

No reliable comparator information for the borough as a whole and depends on definitions of a disability, so we cannot really talk about representation

| | | |
|--------------------|------------|-------------|
| Grand Total | 294 | 100% |
|--------------------|------------|-------------|

Age

| Age | Respondents | % | Census 2011 | percentage point difference |
|---|-------------|-------------|-------------|-----------------------------|
| Did not specify | 2 | 0.7% | | |
| 0 - 16 | 15 | 5.1% | 20.7% | -15.6% |
| For the following part of the table '0-16's have been excluded from the sample %, and population % to get around the issue | | | | |
| 17 - 24 | 25 | 9.0% | 20% | -11.0% |
| 25 - 39 | 139 | 50.2% | 47% | 3.2% |
| 40 - 49 | 53 | 19.1% | 14% | 5.5% |
| 50 - 59 | 40 | 14.4% | 9% | 5.7% |
| 60+* | 20 | 7.2% | 10.6% | -3.4% |
| Grand Total | 277 | 100% | | |

0-16's underrepresented compared to number in borough population, however we can't expect infants and minors to be responding and so cannot make any meaningful statements about this

For the following part of the table '0-16's have been excluded from the sample %, and population % to get around the issue

underrepresented
over represented
over represented
over represented
underrepresented

* aggregated due to small numbers

Ward

| Ward | Respondents | % of survey |
|--------------------------------|-------------|---------------|
| Bethnal Green North | 13 | 4.4% |
| Bethnal Green South | 20 | 6.8% |
| Blackwall and Cubitt Town | 24 | 8.2% |
| Bow East | 21 | 7.1% |
| Bow West | 31 | 10.5% |
| Bromley-by-Bow | 10 | 3.4% |
| East India and Lansbury | 9 | 3.1% |
| Limehouse | 15 | 5.1% |
| Mile End and Globe Town | 22 | 7.5% |
| Mile End East | 16 | 5.4% |
| Millwall | 19 | 6.5% |
| Shadwell | 18 | 6.1% |
| Spitalfields and Banglatown | 11 | 3.7% |
| St Dunstan's and Stepney Green | 17 | 5.8% |
| St Katharine's and Wapping | 15 | 5.1% |
| Weavers | 13 | 4.4% |
| Whitechapel | 14 | 4.8% |
| Did not specify | 6 | 2.0% |
| Grand Total | 294 | 100.0% |

DRAFT

DRAFT

Top 2 Crime Priorities and Top 2 Crime Themes by Equalities Grouping

| Ethnicity | Violence | Serious Acquisitive Crime | Youth Crime | Violence Against Women and Girls | Drugs and Alcohol | Other | Reducing Re-offending | Anti-Social Behaviour | Community Cohesion and Hate Crime | Public Confidence | Other2 | Respondents |
|-------------------------------------|------------|---------------------------|-------------|----------------------------------|-------------------|-----------|-----------------------|-----------------------|-----------------------------------|-------------------|----------|-------------|
| Asian or Asian British: Bangladeshi | 26 | 25 | 22 | 8 | 37 | * | 23 | 41 | 21 | 16 | * | 57 |
| White | 91 | 97 | 82 | 41 | 50 | 7 | 80 | 138 | 69 | 42 | 5 | 184 |
| All other ethnic groups | 30 | 26 | 17 | 16 | 16 | * | 19 | 31 | 24 | 14 | * | 53 |
| Total | 147 | 148 | 121 | 65 | 103 | 12 | 122 | 210 | 114 | 72 | 9 | 294 |

Each ethnic group within 'all other ethnic groups' had 11 responses or fewer and so could not be disaggregated

| Gender | Violence | Serious Acquisitive Crime | Youth Crime | Violence Against Women and Girls | Drugs and Alcohol | Other | Reducing Re-offending | Anti-Social Behaviour | Community Cohesion and Hate Crime | Public Confidence | Other2 | Respondents |
|----------------------|------------|---------------------------|-------------|----------------------------------|-------------------|-----------|-----------------------|-----------------------|-----------------------------------|-------------------|----------|-------------|
| Female | 48 | 55 | 44 | 32 | 37 | * | 42 | 78 | 50 | 23 | * | 111 |
| Male | 91 | 77 | 64 | 27 | 53 | 5 | 70 | 114 | 53 | 46 | * | 153 |
| Not specified/ Other | 8 | 16 | 13 | 6 | 13 | 5 | 10 | 18 | 11 | * | * | 30 |
| Total | 147 | 148 | 121 | 65 | 103 | 12 | 122 | 210 | 114 | 72 | 9 | 294 |

* Less than 5 responses, so too few to show or measure

| Age group | Violence | Serious Acquisitive Crime | Youth Crime | Violence Against Women and Girls | Drugs and Alcohol | Other | Reducing Re-offending | Anti-Social Behaviour | Community Cohesion and Hate Crime | Public Confidence | Other2 | Respondents |
|--------------------|------------|---------------------------|-------------|----------------------------------|-------------------|-----------|-----------------------|-----------------------|-----------------------------------|-------------------|----------|-------------|
| 0 - 16 | 6 | 5 | 10 | * | 5 | | 6 | 11 | 7 | 5 | * | 15 |
| 17 - 24 | 9 | 15 | 9 | 5 | 12 | | 10 | 13 | 9 | 6 | * | 25 |
| 25 - 39 | 72 | 70 | 63 | 35 | 38 | 5 | 62 | 105 | 57 | 28 | * | 139 |
| 40 - 49 | 27 | 23 | 23 | 10 | 24 | * | 23 | 38 | 23 | 15 | * | 53 |
| 50 - 59 | 18 | 20 | 13 | 8 | 19 | * | 12 | 30 | 11 | 11 | * | 40 |
| 60+ | 15 | 14 | * | * | * | * | 8 | 13 | 6 | 7 | * | 20 |
| Not specified | 2 | 2 | | | | | 1 | | 1 | | | 2 |
| Grand Total | 149 | 149 | 121 | 65 | 102 | 11 | 122 | 210 | 114 | 72 | 9 | 294 |

| Sexual orientation | Violence | Serious Acquisitive Crime | Youth Crime | Violence Against Women and Girls | Drugs and Alcohol | Other | Reducing Re-offending | Anti-Social Behaviour | Community Cohesion and Hate Crime | Public Confidence | Other2 | Respondents |
|---------------------------|------------|---------------------------|-------------|----------------------------------|-------------------|-----------|-----------------------|-----------------------|-----------------------------------|-------------------|----------|-------------|
| Heterosexual | 94 | 95 | 78 | 45 | 64 | 6 | 87 | 142 | 73 | 47 | 6 | 191 |
| Prefer not to say / Blank | 38 | 43 | 29 | 18 | 34 | 6 | 26 | 54 | 28 | 19 | * | 80 |
| LGBT | 15 | 10 | 14 | * | 5 | | 9 | 14 | 13 | 6 | * | 23 |
| Grand Total | 147 | 148 | 121 | 65 | 103 | 12 | 122 | 210 | 114 | 72 | 9 | 294 |

* Less than 5 responses, so too few to show or measure

| Disability | Violence | Serious Acquisitive Crime | Youth Crime | Violence Against Women and Girls | Drugs and Alcohol | Other | Reducing Re-offending | Anti-Social Behaviour | Community Cohesion and Hate Crime | Public Confidence | Other2 | Respondents |
|---------------------------|------------|---------------------------|-------------|----------------------------------|-------------------|-----------|-----------------------|-----------------------|-----------------------------------|-------------------|----------|-------------|
| No | 119 | 115 | 98 | 53 | 79 | 6 | 101 | 168 | 92 | 60 | 5 | 233 |
| Yes | 10 | 7 | 7 | * | 8 | * | 5 | 12 | 6 | 5 | * | 17 |
| Prefer not to say / Blank | 18 | 26 | 16 | 11 | 16 | * | 16 | 30 | 16 | 7 | * | 44 |
| Grand Total | 147 | 148 | 121 | 65 | 103 | 12 | 122 | 210 | 114 | 72 | 9 | 294 |

* Less than 5 responses, so too few to show or measure

| Ward | Violence | Serious Acquisitive Crime | Youth Crime | Violence Against Women and Girls | Drugs and Alcohol | Other | Reducing Re-offending | Anti-Social Behaviour | Community Cohesion and Hate Crime | Public Confidence | Other2 | Count of Request Id |
|--------------------------------|------------|---------------------------|-------------|----------------------------------|-------------------|-----------|-----------------------|-----------------------|-----------------------------------|-------------------|----------|---------------------|
| Bethnal Green North | * | 9 | 5 | * | 6 | * | * | 8 | 5 | 5 | * | 13 |
| Bethnal Green South | 7 | 7 | 11 | 5 | 8 | * | 7 | 15 | 10 | * | * | 20 |
| Blackwall and Cubitt Town | 12 | 13 | 7 | 7 | 6 | * | 9 | 18 | 8 | 7 | * | 24 |
| Bow East | 9 | 9 | 11 | 6 | 5 | | 9 | 15 | 9 | 5 | | 21 |
| Bow West | 16 | 15 | 15 | 8 | 9 | | 16 | 21 | 11 | 6 | * | 31 |
| Bromley-by-Bow | 4 | 6 | 6 | * | * | | * | 10 | * | * | | 10 |
| East India and Lansbury | 6 | 4 | 3 | * | * | | * | 8 | 6 | * | | 9 |
| Limehouse | 6 | 8 | 7 | * | 7 | | 11 | 11 | * | 6 | | 15 |
| Mile End and Globe Town | 11 | 10 | 8 | 6 | 9 | * | 11 | 14 | 7 | * | | 22 |
| Mile End East | 7 | 9 | 7 | * | 6 | | 6 | 11 | 8 | * | | 16 |
| Millwall | 12 | 8 | 8 | * | 6 | * | 6 | 15 | 5 | 6 | | 19 |
| Shadwell | 7 | 12 | 8 | * | 8 | * | 5 | 12 | * | * | * | 18 |
| Spitalfields and Banglatown | 7 | 6 | 2 | * | 5 | | * | 8 | * | 6 | | 11 |
| St Dunstan's and Stepney Green | 9 | 6 | 9 | 6 | * | * | 8 | 11 | 8 | * | | 17 |
| St Katharine's and Wapping | 10 | 10 | * | * | * | * | 7 | 10 | 8 | * | * | 15 |
| Weavers | 7 | 5 | * | * | 8 | * | 6 | 10 | 7 | * | | 13 |
| Whitechapel | 11 | 7 | 5 | 5 | * | * | 5 | 9 | 8 | 6 | | 14 |
| Not specified | * | * | * | * | * | | * | * | * | | | 6 |
| Grand Total | 147 | 148 | 121 | 65 | 103 | 12 | 122 | 210 | 114 | 72 | 9 | 294 |

* Less than 5 responses, so too few to show or measure

Answer Combinations

| Responses | Top priority combinations (not in order of priority) | |
|---------------|--|----------------------------------|
| 62 | Violence | Serious Acquisitive Crime |
| 37 | Youth Crime | Drugs and Alcohol |
| 35 | Violence | Youth Crime |
| 31 | Serious Acquisitive Crime | Drugs and Alcohol |
| 25 | Serious Acquisitive Crime | Youth Crime |
| 21 | Serious Acquisitive Crime | Violence Against Women and Girls |
| 21 | Violence | Drugs and Alcohol |
| 20 | Violence | Violence Against Women and Girls |
| 14 | Youth Crime | Violence Against Women and Girls |
| 266 | responses | |
| 90.48% | of online survey sample | |

| Responses | Top theme combinations (not in order of priority) | |
|---------------|---|-----------------------------------|
| 80 | Anti-Social Behaviour | Reducing Re-offending |
| 71 | Anti-Social Behaviour | Community Cohesion and Hate Crime |
| 48 | Anti-Social Behaviour | Public Confidence |
| 27 | Reducing Re-offending | Community Cohesion and Hate Crime |
| 10 | Public Confidence | Community Cohesion and Hate Crime |
| 236 | responses | |
| 80.27% | of online survey sample | |

Conclusion:

This public consultation on top 3 community safety priorities has been the most extensive and responded to in the borough for a several years. Using multiple media channels and attracting 1,013 responses. Crime remains a significant concern of the borough residents as shown in the recent Annual Resident Survey (42% of 1,171 residents said it was their top concern).

The opportunity for members of the public in Tower Hamlets to tell us their priorities has been taken by a significant 1,013 people. Their priorities and ideas of how we can work together as a partnership (both agencies and communities), should be valued and seriously considered along with the findings of our Strategic Review (once produced). These perceptions and comments are key to addressing our community's fear of crime and confidence in the partnership and ultimately Tower Hamlets as a safe place to live.

While there have been a couple of minor flaws in the public consultation collection methods (namely the web page), this does not take anything away from the information that the Tower Hamlets has given us. Based solely on the number of selections by members of the public in Tower Hamlets across all the different collection methods, the top 3 community safety priorities for the Community Safety Plan 2013 are:

| | |
|--------------------------------|-----|
| 1) Anti-social Behaviour (ASB) | 298 |
| 2) Serious Acquisitive Crime | 200 |
| 3) Drugs and Alcohol | 196 |
| - Violence | 196 |

Timetable of CSP Plan Consultation and Plan Development:
(Presented to and signed off by CSP on 23rd February 2012)

April – 14th June Public and Partnership Consultation

- Extensive Public Consultation on levels of crime, disorder/anti-social behaviour, substance misuse and re-offending rates identifying community safety priorities for the 2013 onwards* Plan
- Analysis of consultation findings for inclusion in Strategic Review
- Update on feedback from consultation exercise will be presented to the CSP on 13th June.

1st July – 23rd August Community Safety Strategic Review carried out

- The partnership agencies will produce the Strategic Assessment/Review and present the findings to the Partnership at 23rd August CSP Meeting.
- CSP then use the information in the Strategic Review and Consultation Findings to decide on the term of the next CSP Plan.

24th August – 24th October Community Safety Plan (2013 onwards*) written

- Plan produced based on Public Consultation and Strategic Review Findings

25th October – 11th December Partnership Feedback on Draft Plan

- Partnership agencies send comments, amendments for Final version of the CSP Plan 2013*
- Final draft of Plan is presented and approved by CSP at meeting on 11th December

12th December 2012 – 31st March 2013 Council Approval Process

- Community Safety Plan 2013* enters the council committee approval process (CMT, MAB, PAP and Cabinet), culminating in Full Council as per the Council Constitution.

Recommendations from Café Connect Discussions

Menu 1 – Drugs, Alcohol and Anti-Social Behaviour

Drugs and alcohol issues are of particular concern for residents. Is this your experience?

How would you want the Police, Council and other partners to deal with those issues?

For police

- Need to tackle visible drug dealing in local communities

Council

- Need more youth engagement via youth centres
- Early intervention – engage parents to educate about drugs/types (BME community)
- Use media options that work and reach communities
- Need programme for alternative therapy for skunk and cannabis users
- Some young people prefer alcohol treatment service that is specifically for them e.g. don't want to join older people/adults

Police and Council

- Need to work with registered social landlords – need rapid action
- Provide targeted social education (social marketing) to disengaged young people that shows the effects of underage drinking or irresponsible drinking.

Peoples' observations/general comments

- Young people drinking late on residential estates
- They influence others (younger peers)
- Anti-social drinking or drug use causes noise nuisance
- Friends are sometimes more supportive than families
- Hold conference with parents; get them involved in their children's rehabilitation.
- Dealing seen as income source; parents/guardians need to question young people's income sources.

Anti-social behaviour

For police

- Police officers need to listen to residents/customers and do follow up work
- Need to actively engage the local community

For council

- Need coordination of services
- Need restorative justice programmes delivered in the community
- Facilitate more involvement from male parents/fathers

- More sporting programmes to engage people early

Peoples' observations/general comments

- Young people need more role models, senior police officers etc
- Parents need to take more ownership of their children's' behaviour

Menu 2 - Robbery and Burglary

Have you been or know somebody who has been a victim of burglary or robbery? And what impact did that have on you/them?

Have you been or know somebody who has been a victim of violent crime? And what impact did that have on you/them?

For police

- Bag theft on licensed premises – delay in police response
- Educating youth regarding implication of crime, particularly knife crime

For police and council

- Education of community regarding reporting suspicious activity
- Weapons and drugs found in public places – need more regular maintenance of public places
- Thrill of crime – need to divert young people through youth club activities

For council

- Early intervention with problem youths
- Need to increase the safety of older people who are vulnerable

Peoples' observations/general comments

- Youth related crime is on the up – need to make parents more accountable
- Under reporting by BME people/communities
- Perception that robbery and burglary vehicle crime is up.

Menu 3- Youth and prolific offending

What can the Borough do to divert young people from crime and anti-social behaviour?

How can the community support the Council and partners in helping rehabilitate young people that have been previously involved in crime and criminality?

For council

Early Intervention -

- Have provisions to target support to children and young people before problems escalate, including providing education around drugs.
- Provide support to parents of children and young people at risk of engaging in crime.
- Work closely with primary schools, to provide support to both parents and children.

Community Events: Involving young offenders –

- Engaging young offenders on court orders to help with events as part of their reparations session e.g. young offenders could assist by helping to put out tables and chairs, distribute leaflets for public events.
- Support community to organise intergenerational events such as tea mornings to help tackle negative perception held of young people

Menu 4 - Hate Crime & Cohesion and Public Confidence

How would you want the Police to build / improve relationship with the community?

Given that there are lots of different communities in Tower Hamlets, do you think people live together peacefully?

For police

- Crime figures need to be better explained and broken down into categories that lay people can understand
- Police need to provide feedback to victims of case outcome
- Police not recording incidents as hate crime; appearing to ignore it.
- Enable victims to provide feedback on police case investigations
- Need more higher visibility of police officers
- Community want to see evidence of crime falling e.g. transparency, openness and breakdown.

For council and police

- Educate young people and community about hate crime/cohesion
- Homophobia in schools is a part of everyday life and needs to be tackled
- Increased awareness of hate crime services for young people, agencies and communities
- Ignorance of what services are provided; residents do not know what police/council do

Peoples' observations/general comments

- We rarely see police on the streets
- We need to integrate communities, not segregate e.g. especially in housing
- People feel safer in London/THs than in other cities
- The only people you can rely on is the police
- This is a general cohesive borough
- Prejudice against certain groups of parents that 'they cannot look after their children'
- More can be done by Police to stop fights in schools
- Language prevents access to services

- In some parts of the borough, there is still respect for each other
- Muslim people respect Christians and vice versa.
- Tower Hamlets is a very diverse borough
- Groups of youths in Tower Hamlets are more respectful to older people than in other boroughs
- Older people are also harassed/ignored and vulnerable to crime

Menu 5 – Violence against Women and Girls

At least 1 in 4 women experience violence in their lifetime. The vast majority of the victims of domestic violence are women and children (over 95% of police reports in Tower Hamlets), and women are also considerably more likely to experience repeated and severe forms of violence, as well as sexual assault.

Partner agencies in the borough have a range of services to raise awareness, encourage reporting, support victims and take action against perpetrators of violence.

What kind of actions do you think are most important in addressing this problem?

For council

- Duty line – should be 24 hours not Mon-Fri, better promotion of this
- Organise themed awareness raising weeks e.g. tie a purple ribbon around a tree
- School places available for women's children if moving out (as women may not be allowed out)
- Encourage shopkeepers to report, put up posters
- Encourage schools to put up posters for women and parents; deliver talks to children - that it's not ok, they can tell
- Educate men; awareness programmes e.g. films – on control and early signs
- Youth clubs for boys and girls; to learn about equality between genders
- Provide anger management courses for men
- To provide suitable housing for those that are fleeing domestic violence
- Provide guidance for women on how to cope and stay safe
- Provide counselling/guidance for couples or signpost to such services
- Empower voices of women and children – your rights, you are valued (womenleadership development)

For council and police

- Encourage people to report to police
- Support community centres to hold regular forums on this topic and will filter down
- Deal with cases where the woman drops the case e.g. if he promises never to do it again. Meet women in public/community centres. Police used as a warning e.g. if you do it again, you will be going to court
- Make clear where people can go
- Provide counselling services for victims and explain confidentiality if people report
- Design posters in different languages; deliver poster campaigns
- Facilitate men's access to childcare in public (not via woman), police on standby
- Provide, facilitate and support Safe houses

Peoples' observations/general comments

- Children witness it are victims too – refer to social services
- Not only husband and wife, can be against older relatives/women
- Men are victims too; grown up children are victims too
- Not everyone will report to police, we need to explore other routes e.g. volunteers on the streets who people can go to
- Are the police the best agency to report to
- Encouraging men to consider their children more
- Men never go to police if victims
- Address cause of violence e.g. money problems, money management, alcohol, drugs, medicine/treatment
- BME communities – lack of reporting due to stigma and social issues e.g. rape would be a scandal and person not punished
- Churches and mosques (safe places) - their role in reporting to police.

Additional Comments from Public Consultation on Mytowerhamlets

Due to the design of the online survey, people were still presented with the opportunity to list their other choice, even if they had not chosen the 'Other' option/answer. 116 people chose to submit an answer to 'Other', even though they had already chosen their top two priorities in each question. Whilst technically these can be included in the responses/findings of the survey they cannot be included in the official results as some people therefore had chosen their priorities twice.

Additional comments under 'Other' tend to reflect the top priorities, although they refer to specific types of issues within those broad offence/crime themes/types i.e. Youths causing ASB, which is a sub category of Anti-Social Behaviour; bicycle theft which is a sub category of Acquisitive Crime.

Appendix 3 – Equalities Considerations

The Community Safety Plan 2013-16 is informed by both the Strategic Assessment 2012, which analyses data on the trends and future local challenges, and through consultation with both members of the public and the wide membership of the Community Safety Partnership (Safe and Cohesive Community Plan Delivery Group). A number of cross cutting issues were also considered as part of this process.

From this detailed evaluation of the strategic landscape and assessment of the most effective governance arrangements, priority areas were developed. This included consideration of the drivers of crime locally and equalities - through the impact on different groups. This has influenced priority setting and the inclusion of the Community Cohesion, Contingency Planning Tension Monitoring Group and the Preventing Violent Extremism Programme Board in addition to the No Place For Hate Forum as key elements of the structure for delivering the Plan. As such, the Plan's priorities for 2013-16 are:

- Gangs and Serious Youth Violence
- Anti-Social Behaviour (including Arson)
- Drugs and Alcohol
- Violence (with a focus on Domestic Violence)
- Hate Crime and Cohesion

Cross-cutting Priorities:

- Public Confidence
- Reducing Re-offending

A high level test of relevance equalities screening has been undertaken on the Plan. This is attached as appendix a. As the Plan is to be further developed through the subgroups' action plans – further detailed evaluation of equalities in the action plans will be undertaken by those subgroups to ensure they continue to be considered with the development of the Plan.

The Plan is a jointly owned partnership approach – it is not solely owned by the Council – so the authority will communicate the importance of ensuring subgroups give 'due regard' to equalities in the action plan development process and are aware of the requirement to provide appropriate evidence: This will be recorded through the inclusion of equalities considerations in the template for creating the action plan. As sub-group action plans are presented to the Community Safety Partnership (Safe and Cohesive CPDG) equalities considerations will be evaluated by the members.

Appendix 4 Equalities Analysis - Initial Screening Document

This document is to be used for:-

- Establishing whether an Equality Analysis needs to be undertaken for the policy, function or strategy. *(Based on Section 4 around Impacts)*
- Reviewing existing equality analysis (eqia) to ascertain whether the original EQIA needs revising.

(N.B the revision of an equality analysis (eqia) is proportionate to the amount of change in relation to the policy, function, strategy)

Section 1 – General Information

| |
|--|
| Name of the Policy or Function Safe and Cohesive Plan 2013-16 |
| Service area Safer Communities Service |
| Team name The Community Safety Partnership |
| Service manager Emily Fieran-Reed |
| Name and role of the officer completing the Initial Screening <i>(Explain why these people were selected i.e. the knowledge and experience they bring to the process)</i> Colin Hewitt – CSP Officer, Community Safety |

Section 2 - Information about the Policy or Function

| | | |
|--|--|-----------------------------------|
| Is this a policy or function? | Policy <input checked="" type="checkbox"/> | Function <input type="checkbox"/> |
| Is the policy or function strategic or developmental? | | |
| Strategic <input checked="" type="checkbox"/> | Developmental <input type="checkbox"/> | |
| Is this a new or existing policy or function? | New <input checked="" type="checkbox"/> | Existing <input type="checkbox"/> |
| If for a new policy or function, please indicate the date this form was undertaken April 2013 | | |
| If for an existing policy or function, what was the original date(s) the equality analysis (Initial Screening or EQIA) was undertaken <i>(please attach a copy of any previous equality analysis)</i> | | |
| What are the main aims and objectives of the Policy or Function | | |

There is a legal requirement for each Community Safety Partnership formerly Crime and Disorder Reduction Partnership (Safe & Cohesive CPDG) to have a Community Safety Plan.

The Safe and Cohesive Plan 2013-2016 has been created in consultation with members of the Safe & Cohesive CPDG. The objective of the Plan is to address the following local priorities:

- Gangs and Serious Youth Violence
- Anti-Social Behaviour (including Arson)
- Drugs and Alcohol
- Violence (with a focus on Domestic Violence)
- Hate Crime and Cohesion

Cross-cutting Priorities:

- Public Confidence
- Reducing Re-offending

Who are the main stakeholders:

The London Borough of Tower Hamlets
The Police
London Fire Brigade
Probation Services
Tower Hamlets Primary Care Trust
Those who live, work and visit the borough

Is this policy/function associated with any other policy or function of the Council
(i.e. *Community Plan, One Tower Hamlets etc.*)

- The Community Plan
- Children and Young People's Plan
- Substance Misuse Strategy 2011-2014 (Drugs & Alcohol)
- Violence Against Women and Girls Strategy
- Integrated Offender Management Plan
- PREVENT Plan (under review in line with National Guidance)
- ASB Profile
- Hate Crime Strategy

Section 3 – Information about Existing Policies and, or Changes to Functions only

Has there been any 'significant' change to the Policy or Function?

Yes No

If yes, Please indicate what the change will be and what has brought about this change to the

policy or function?

has been NO SIGNIFICANT amendments to an existing policy/function there is no need to continue to Section 4 below or a full equalities analysis

DRAFT

Section 4 – The Impact

(Briefly assess the potential impact that the policy/function could have on each of the target groups. The potential impact could be negative, positive or neutral. If you have assessed negative potential impact for any of the target groups you will need to also assess whether that negative potential impact is high, medium or low). Please also indicate if there is any link to Community Cohesion.

Identify the potential impact on the following groups and:

| Target Groups What impact will the 'new' or 'significantly' amended policy or function have on specific groups of service users? | Impact – Positive or Adverse | Reason(s) <ul style="list-style-type: none"> • Please add a narrative to justify your claims around impacts and, • Please describe the analysis and interpretation of evidence to support your conclusion as this will inform members decision making • Can the negative impact be justified on the grounds of promoting equality? |
|--|-------------------------------------|---|
| Race | Positive | All those who live, work and visit our borough will benefit from the Council and Partners addressing anti-social behaviour, crime and the causes of crime through the priority areas. These priority areas will be addressed through the action plans developed by the subgroups. For this target group, the priority of addressing Hate Crime and Cohesion may be of particular relevance. |
| Disability | Positive | All those who live, work and visit our borough will benefit from the Council and Partners addressing anti-social behaviour, crime and the causes of crime through the priority areas. These priority areas will be addressed through the action plans developed by the subgroups. For this target group, the priority of addressing Hate Crime and Cohesion may be of particular relevance. |
| Gender | Positive | All those who live, work and visit our borough will benefit from the Council and Partners addressing anti-social behaviour, crime and the causes of crime through the priority areas. These priority areas will be addressed through the action plans developed by the subgroups. For this target group, the priority of addressing Violence (with a focus on Domestic Violence) may be of particular relevance. |

| | | |
|----------------------------------|----------|--|
| Gender Reassignment | Positive | <p>All those who live, work and visit our borough will benefit from the Council and Partners addressing anti-social behaviour, crime and the causes of crime through the priority areas. These priority areas will be addressed through the action plans developed by the subgroups.</p> <p>For this target group, the priority of addressing Hate Crime and Cohesion may be of particular relevance.</p> |
| Sexual Orientation | Positive | <p>All those who live, work and visit our borough will benefit from the Council and Partners addressing anti-social behaviour, crime and the causes of crime through the priority areas. These priority areas will be addressed through the action plans developed by the subgroups.</p> <p>For this target group, the priority of addressing Hate Crime and Cohesion may be of particular relevance.</p> |
| Religion or Belief | Positive | <p>All those who live, work and visit our borough will benefit from the Council and Partners addressing anti-social behaviour, crime and the causes of crime through the priority areas. These priority areas will be addressed through the action plans developed by the subgroups.</p> <p>For this target group, the priority of addressing Hate Crime and Cohesion may be of particular relevance.</p> |
| Age | Positive | <p>All those who live, work and visit our borough will benefit from the Council and Partners addressing anti-social behaviour, crime and the causes of crime through the priority areas. These priority areas will be addressed through the action plans developed by the subgroups.</p> <p>For this target group, the priority of addressing Gangs and Serious Youth Violence may be of particular relevance.</p> |
| Socio-economic | Positive | <p>All those who live, work and visit our borough will benefit from the Council and Partners addressing anti-social behaviour, crime and the causes of crime through the priority areas. These priority areas will be addressed through the action plans developed by the subgroups.</p> <p>For this target group, the priorities of Drugs and Alcohol and Reducing Re-offending may be of particular relevance.</p> |
| Marriage and Civil Partnerships. | Positive | <p>All those who live, work and visit our borough will benefit from the Council and Partners addressing anti-social behaviour, crime and the causes of crime through the priority areas. These priority areas will be addressed through the action plans developed by the subgroups.</p> |

| | | |
|-------------------------|----------|---|
| Pregnancy and Maternity | Positive | All those who live, work and visit our borough will benefit from the Council and Partners addressing anti-social behaviour, crime and the causes of crime through the priority areas. These priority areas will be addressed through the action plans developed by the subgroups. |
|-------------------------|----------|---|

As a result of completing the above, what is the potential impact of your policy/function on the public, giving particular regard to potential impacts on minority or protected groups?

High Medium Low

Equalities to be further considered at the Action Planning stage.

If you have identified a LOW impact or, there has been NO SIGNIFICANT amendments to an existing policy/function there is no need to continue to a full equalities analysis.

If you have assessed the potential impact as MEDIUM or HIGH you will now need to complete a full equalities analysis - building upon the findings of the initial impact assessment (section 4)

Appendix 5 Borough Crime Statistics & Trends 2000/01 – 2012/13

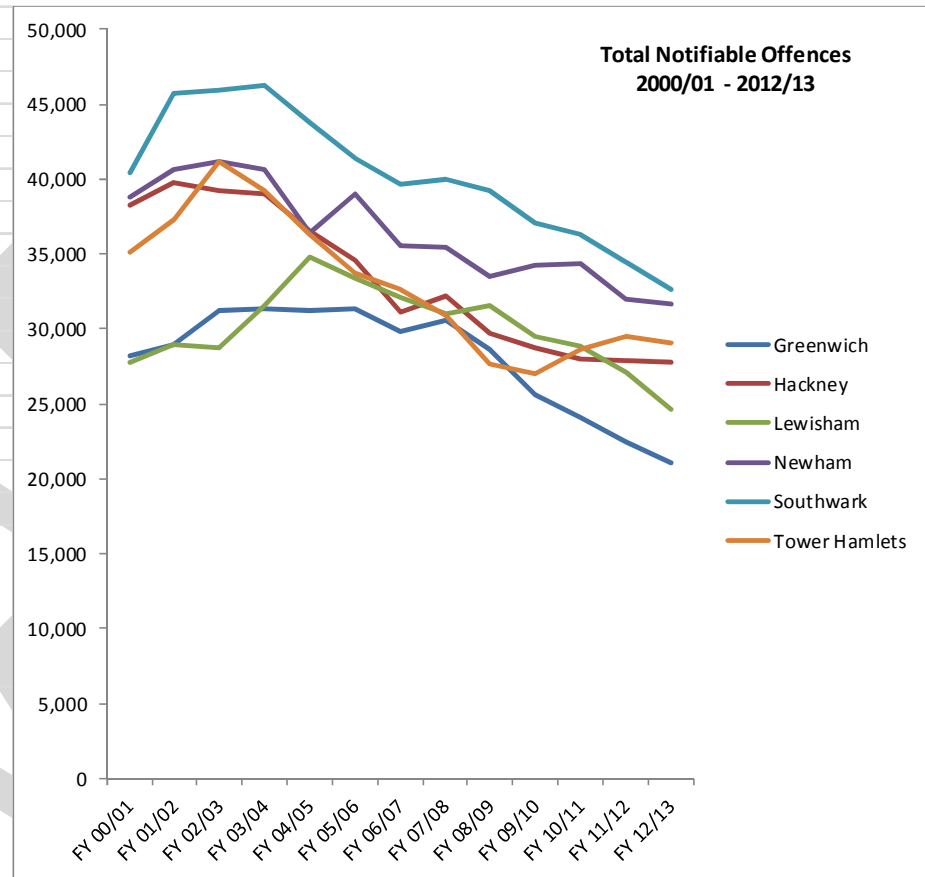
Tower Hamlets Crime Types 2000/01 – 2012/13

| Year | Violence Against The Person Total | Sexual Offences Total | Robbery Total | Burglary in a Dwelling | Theft/Taking Of Motor Vehicle | Theft From Motor Vehicle | Theft Person | Criminal Damage Total | Dealer a Day Arrests | Total Notifiable Offences |
|---|-----------------------------------|-----------------------|----------------|------------------------|-------------------------------|--------------------------|----------------|-----------------------|----------------------------------|---------------------------|
| FY 00/01 | 5965 | 383 | 1757 | 1878 | 2466 | 4374 | 538 | 4608 | | 35,070 |
| FY 01/02 | 6390 | 347 | 2117 | 1900 | 2225 | 5091 | 1059 | 4710 | | 37,273 |
| FY 02/03 | 7538 | 449 | 1790 | 2114 | 2260 | 6026 | 943 | 5278 | | 41,124 |
| FY 03/04 | 7724 | 372 | 1568 | 1735 | 2094 | 4471 | 830 | 5036 | | 39,188 |
| FY 04/05 | 7895 | 410 | 1457 | 1699 | 1843 | 3437 | 595 | 4427 | | 36,329 |
| FY 05/06 | 7455 | 401 | 1675 | 2108 | 1570 | 3642 | 578 | 3720 | | 33,756 |
| FY 06/07 | 7727 | 403 | 1908 | 1638 | 1289 | 2965 | 479 | 3523 | | 32,627 |
| FY 07/08 | 6701 | 354 | 1367 | 1585 | 1161 | 3004 | 316 | 3326 | | 30,892 |
| FY 08/09 | 6070 | 309 | 1069 | 1077 | 898 | 2441 | 878 | 3130 | 421 | 27,712 |
| FY 09/10 | 6195 | 336 | 934 | 1073 | 797 | 1672 | 1158 | 2948 | 409 | 26,989 |
| FY 10/11 | 6302 | 378 | 1163 | 1231 | 825 | 2133 | 1366 | 2804 | 412 | 28,668 |
| FY 11/12 | 5817 | 431 | 1415 | 1538 | 873 | 1944 | 1606 | 2464 | 433 | 29463 |
| FY 12/13 | 6119 | 380 | 1440 | 1390 | 842 | 1817 | 1816 | 2190 | 397 | 29033 |
| Difference 2012/13 - 2011/12 (percentage) | ↑ 302 (5.19%) | ↓ 51 (11.83%) | ↑ 25 (1.76%) | ↓ 148 (9.62%) | ↓ 31 (3.55%) | ↓ 127 (6.53%) | ↑ 210 (13.07%) | ↓ 274 (11.12%) | ↓ 36 (8.31%) | ↓ 430 (1.45%) |
| Difference 2012/13 - 2000/01 (percentage) | ↑ 154 (2.58%) | ↓ 3 (0.78%) | ↓ 317 (18.04%) | ↓ 488 (25.98%) | ↓ 1624 (65.85%) | ↓ 2557 (58.45%) | ↑ 1278 (237%) | ↓ 2418 (52.47%) | ↓ 24 (5.7%) 2012/13 - 2008/09 | ↓ 6037 (17.21%) |

Total Notifiable Offences Comparison with Surrounding Boroughs 2000/01 – 2012/13

| Year | Total Notifiable Offences | | | | | |
|----------|---------------------------|---------|----------|--------|-----------|---------------|
| | Greenwich | Hackney | Lewisham | Newham | Southwark | Tower Hamlets |
| FY 00/01 | 28,165 | 38,242 | 27,814 | 38,776 | 40,447 | 35,070 |
| FY 01/02 | 28,995 | 39,769 | 29,008 | 40,616 | 45,707 | 37,273 |
| FY 02/03 | 31,202 | 39,267 | 28,763 | 41,157 | 45,960 | 41,124 |
| FY 03/04 | 31,347 | 39,035 | 31,577 | 40,615 | 46,276 | 39,188 |
| FY 04/05 | 31,186 | 36,492 | 34,833 | 36,460 | 43,771 | 36,329 |
| FY 05/06 | 31,354 | 34,630 | 33,387 | 39,020 | 41,432 | 33,756 |
| FY 06/07 | 29,829 | 31,160 | 32,150 | 35,597 | 39,713 | 32,627 |
| FY 07/08 | 30,617 | 32,241 | 31,055 | 35,448 | 40,029 | 30,892 |
| FY 08/09 | 28,690 | 29,715 | 31,549 | 33,536 | 39,271 | 27,712 |
| FY 09/10 | 25,631 | 28,722 | 29,544 | 34,240 | 37,037 | 26,989 |
| FY 10/11 | 24,148 | 28,035 | 28,888 | 34,374 | 36,273 | 28,668 |
| FY 11/12 | 22434 | 27902 | 27168 | 32011 | 34483 | 29463 |
| FY 12/13 | 21078 | 27733 | 24654 | 31686 | 32616 | 29033 |

| | | | | | | |
|--|--------------------|---------------------|--------------------|--------------------|--------------------|--------------------|
| Difference 2012/13 - 2011/12 (percentage) | ↓ 1356 (6.04%) | ↓ 169 (0.6%) | ↓ 2514 (9.25%) | ↓ 325 (1.01%) | ↓ 1867 (5.41%) | ↓ 430 (1.45%) |
| Difference 2012/13 - 2000/01 (percentage) | ↓ 7087 (25.15%) | ↓ 10509 (27.69%) | ↓ 3160 (11.36%) | ↓ 7090 (18.28%) | ↓ 7831 (19.36%) | ↓ 6037 (17.21%) |



Crime Type Comparisons with Surrounding Boroughs

2000/01

| | Violence Against The Person Total | Sexual Offences Total | Robbery Total | Burglary in a Dwelling | Theft/Taking Of Motor Vehicle | Theft From Motor Vehicle | Theft Person | Criminal Damage Total | Total Notifiable Offences |
|---------------|-----------------------------------|-----------------------|---------------|------------------------|-------------------------------|--------------------------|--------------|-----------------------|---------------------------|
| Greenwich | 6308 | 343 | 469 | 1904 | 2443 | 2913 | 151 | 5057 | 28,165 |
| Hackney | 6320 | 371 | 2275 | 3130 | 2990 | 5104 | 879 | 4828 | 38,242 |
| Lewisham | 5331 | 372 | 1547 | 2494 | 2196 | 2240 | 307 | 4549 | 27,814 |
| Newham | 7344 | 334 | 2106 | 1839 | 3848 | 5176 | 649 | 6282 | 38,776 |
| Southwark | 7442 | 444 | 2162 | 2699 | 2483 | 3798 | 743 | 5279 | 40,447 |
| Tower Hamlets | 5965 | 383 | 1757 | 1878 | 2466 | 4374 | 538 | 4608 | 35,070 |

2011/12

| | Violence Against The Person Total | Sexual Offences Total | Robbery Total | Burglary in A Dwelling | Theft/Taking Of Motor Vehicle | Theft From Motor Vehicle | Theft Person | Criminal Damage Total | Total Notifiable Offences |
|---------------|-----------------------------------|-----------------------|---------------|------------------------|-------------------------------|--------------------------|--------------|-----------------------|---------------------------|
| Greenwich | 5305 | 365 | 756 | 1739 | 685 | 1912 | 666 | 2712 | 22434 |
| Hackney | 5393 | 370 | 1222 | 1347 | 899 | 1918 | 2831 | 2111 | 27902 |
| Lewisham | 6252 | 436 | 1557 | 2218 | 890 | 2192 | 743 | 2944 | 27168 |
| Newham | 6415 | 432 | 2458 | 2113 | 1495 | 3340 | 1735 | 2577 | 32011 |
| Southwark | 6610 | 503 | 2476 | 2182 | 1085 | 2074 | 2071 | 3023 | 34483 |
| Tower Hamlets | 5817 | 431 | 1415 | 1538 | 873 | 1944 | 1606 | 2464 | 29463 |

2012/13

| | Violence Against The Person Total | Sexual Offences Total | Robbery Total | Burglary in A Dwelling | Theft/Taking Of Motor Vehicle | Theft From Motor Vehicle | Theft Person | Criminal Damage Total | Total Notifiable Offences |
|---------------|-----------------------------------|-----------------------|---------------|------------------------|-------------------------------|--------------------------|--------------|-----------------------|---------------------------|
| Greenwich | 5293 | 325 | 554 | 1464 | 606 | 1700 | 735 | 2197 | 21078 |
| Hackney | 5693 | 367 | 1233 | 1432 | 687 | 2490 | 3146 | 1809 | 27733 |
| Lewisham | 5759 | 401 | 1340 | 2462 | 834 | 2105 | 773 | 2315 | 24654 |
| Newham | 6451 | 402 | 2260 | 1982 | 1075 | 3050 | 2352 | 2283 | 31686 |
| Southwark | 6490 | 415 | 2583 | 1924 | 895 | 1910 | 2663 | 2356 | 32616 |
| Tower Hamlets | 6119 | 380 | 1440 | 1390 | 842 | 1817 | 1816 | 2190 | 29033 |